

## ARG59494 anti-LRIG3 antibody

Package: 100 µl  
Store at: -20°C

### Summary

Product Description	Rabbit Polyclonal antibody recognizes LRIG3
Tested Reactivity	Hu
Tested Application	WB
Host	Rabbit
Clonality	Polyclonal
Isotype	IgG
Target Name	LRIG3
Species	Human
Immunogen	KLH-conjugated synthetic peptide between aa. 23-54 of Human LRIG3.
Conjugation	Un-conjugated
Alternate Names	LIG-3; Leucine-rich repeats and immunoglobulin-like domains protein 3; LIG3

### Application Instructions

Application table	Application	Dilution
	WB	1:2000
Application Note	* The dilutions indicate recommended starting dilutions and the optimal dilutions or concentrations should be determined by the scientist.	
Positive Control	HepG2	
Observed Size	~ 120 kDa	

### Properties

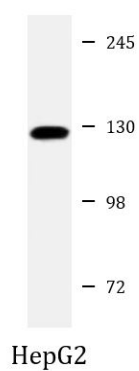
Form	Liquid
Purification	Purification with Protein A and immunogen peptide.
Buffer	PBS and 0.09% (W/V) Sodium azide.
Preservative	0.09% (W/V) Sodium azide.
Storage instruction	For continuous use, store undiluted antibody at 2-8°C for up to a week. For long-term storage, aliquot and store at -20°C or below. Storage in frost free freezers is not recommended. Avoid repeated freeze/thaw cycles. Suggest spin the vial prior to opening. The antibody solution should be gently mixed before use.
Note	For laboratory research only, not for drug, diagnostic or other use.

### Bioinformation

Gene Symbol	LRIG3
Gene Full Name	leucine-rich repeats and immunoglobulin-like domains 3
Function	May play a role in craniofacial and inner ear morphogenesis during embryonic development. May act within the otic vesicle epithelium to control formation of the lateral semicircular canal in the inner ear, possibly by restricting the expression of NTN1 (By similarity). [UniProt]
Calculated Mw	123 kDa
Cellular Localization	Cell membrane; Single-pass type I membrane protein. Cytoplasmic vesicle membrane; Single-pass type I membrane protein. Note=Detected in cytoplasmic vesicles when coexpressed with ERBB4. [UniProt]

## Images

---



ARG59494 anti-LRIG3 antibody WB image

Western blot: 20 µg of HepG2 cell lysate stained with ARG59494 anti-LRIG3 antibody at 1:2000 dilution.