

ARG59489 anti-SP6 antibody

Package: 100 µl
Store at: -20°C

Summary

Product Description	Rabbit Polyclonal antibody recognizes SP6
Tested Reactivity	Hu
Predict Reactivity	Ms
Tested Application	FACS, WB
Host	Rabbit
Clonality	Polyclonal
Isotype	IgG
Target Name	SP6
Species	Human
Immunogen	KLH-conjugated synthetic peptide corresponding to aa. 196-225 of Human SP6.
Conjugation	Un-conjugated
Alternate Names	Transcription factor Sp6; EPIPROFIN; EPFN; Krueppel-like factor 14; KLF14

Application Instructions

Application table	Application	Dilution
	FACS	1:10 - 1:50
	WB	1:1000
Application Note	* The dilutions indicate recommended starting dilutions and the optimal dilutions or concentrations should be determined by the scientist.	
Positive Control	K562	

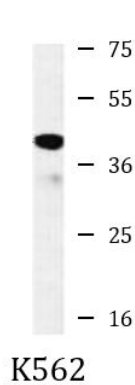
Properties

Form	Liquid
Purification	Purification with Protein A and immunogen peptide.
Buffer	PBS and 0.09% (W/V) Sodium azide.
Preservative	0.09% (W/V) Sodium azide.
Storage instruction	For continuous use, store undiluted antibody at 2-8°C for up to a week. For long-term storage, aliquot and store at -20°C or below. Storage in frost free freezers is not recommended. Avoid repeated freeze/thaw cycles. Suggest spin the vial prior to opening. The antibody solution should be gently mixed before use.
Note	For laboratory research only, not for drug, diagnostic or other use.

Bioinformation

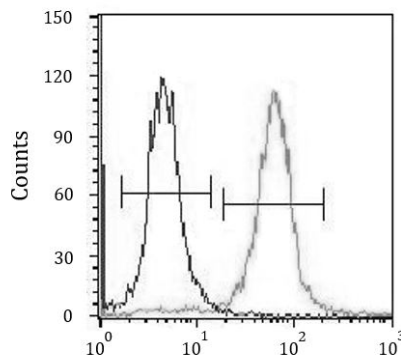
Gene Symbol	SP6
Gene Full Name	Sp6 transcription factor
Background	SP6 belongs to a family of transcription factors that contain 3 classical zinc finger DNA-binding domains consisting of a zinc atom tetrahedrally coordinated by 2 cysteines and 2 histidines (C2H2 motif). These transcription factors bind to GC-rich sequences and related GT and CACCC boxes (Schohy et al., 2000 [PubMed 11087666]).[supplied by OMIM, Mar 2008]
Function	Promotes cell proliferation. [UniProt]
Calculated Mw	40 kDa
Cellular Localization	Nucleus. [UniProt]

Images



ARG59489 anti-SP6 antibody WB image

Western blot: 35 µg of K562 cell lysate stained with ARG59489 anti-SP6 antibody.



ARG59489 anti-SP6 antibody FACS image

Flow Cytometry: K562 cells stained with ARG59489 anti-SP6 antibody (right histogram) or without primary antibody as control (left histogram), followed by FITC labelled secondary antibody.