

## ARG59440 anti-SLC7A3 / CAT3 antibody

Package: 50 µg  
Store at: -20°C

### Summary

Product Description	Rabbit Polyclonal antibody recognizes SLC7A3 / CAT3
Tested Reactivity	Hu
Tested Application	WB
Host	Rabbit
Clonality	Polyclonal
Isotype	IgG
Target Name	SLC7A3 / CAT3
Species	Human
Immunogen	Synthetic peptide corresponding to aa. 1-30 of Human SLC7A3 / CAT3. (MPWQAFRRFGQKLVRRTLESGMAETRLAR)
Conjugation	Un-conjugated
Alternate Names	ATRC3; Cationic amino acid transporter γ+; Solute carrier family 7 member 3; CAT-3; Cationic amino acid transporter 3; CAT3

### Application Instructions

Application table	Application	Dilution
	WB	0.1 - 0.5 µg/ml
Application Note	* The dilutions indicate recommended starting dilutions and the optimal dilutions or concentrations should be determined by the scientist.	

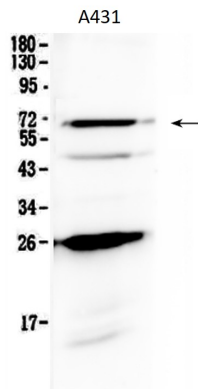
### Properties

Form	Liquid
Purification	Affinity purification with immunogen.
Buffer	0.9% NaCl, 0.2% Na <sub>2</sub> HPO <sub>4</sub> , 0.05% Sodium azide and 5% BSA.
Preservative	0.05% Sodium azide
Stabilizer	5% BSA
Concentration	0.5 mg/ml
Storage instruction	For continuous use, store undiluted antibody at 2-8°C for up to a week. For long-term storage, aliquot and store at -20°C or below. Storage in frost free freezers is not recommended. Avoid repeated freeze/thaw cycles. Suggest spin the vial prior to opening. The antibody solution should be gently mixed before use.
Note	For laboratory research only, not for drug, diagnostic or other use.

## Bioinformation

Gene Symbol	SLC7A3
Gene Full Name	solute carrier family 7 (cationic amino acid transporter, $\gamma$ + system), member 3
Background	This gene encodes a member of the solute carrier family 7. The encoded protein is a sodium-independent cationic amino acid transporter. Alternate splicing results in multiple transcripts that encoded the same protein.[provided by RefSeq, May 2010]
Function	Mediates the uptake of the cationic amino acids arginine, lysine and ornithine in a sodium-independent manner. [UniProt]
Calculated Mw	67 kDa
PTM	N-glycosylated. [UniProt]
Cellular Localization	Cell membrane; Multi-pass membrane protein. [UniProt]

## Images



ARG59440 anti-SLC7A3 / CAT3 antibody WB image

Western blot: 50  $\mu$ g of sample under reducing conditions. A431 whole cell lysate stained with ARG59440 anti-SLC7A3 / CAT3 antibody at 0.5  $\mu$ g/ml, overnight at 4°C.