

**ARG59439**  
anti-SP6 antibodyPackage: 50 µg  
Store at: -20°C

### Summary

|                     |   |
|---------------------|---|
| Product Description | Rabbit Polyclonal antibody recognizes SP6   |
| Tested Reactivity   | Hu, Ms, Rat   |
| Tested Application  | WB  |
| Host                | Rabbit  |
| Clonality           | Polyclonal  |
| Isotype             | IgG   |
| Target Name         | SP6   |
| Species             | Human   |
| Immunogen           | Synthetic peptide corresponding to a sequence of Human SP6.<br>(QPDMSHHYESWFRPTHPGAEDGSWWDLHPGTSWMDLPH) |
| Conjugation         | Un-conjugated   |
| Alternate Names     | Transcription factor Sp6; EPIPROFIN; EPFN; Krueppel-like factor 14; KLF14                               |

### Application Instructions

| Application table | Application  | Dilution        |
|-------------------|--|-----------------|
|                   | WB   | 0.1 - 0.5 µg/ml |
| Application Note  | * The dilutions indicate recommended starting dilutions and the optimal dilutions or concentrations should be determined by the scientist. |                 |

### Properties

|                     |  |
|---------------------|--|
| Form                | Liquid   |
| Purification        | Affinity purification with immunogen.  |
| Buffer              | 0.9% NaCl, 0.2% Na <sub>2</sub> HPO <sub>4</sub> , 0.05% Sodium azide and 4% Trehalose.  |
| Preservative        | 0.05% Sodium azide   |
| Stabilizer          | 4% Trehalose   |
| Concentration       | 0.5 mg/ml  |
| Storage instruction | For continuous use, store undiluted antibody at 2-8°C for up to a week. For long-term storage, aliquot and store at -20°C or below. Storage in frost free freezers is not recommended. Avoid repeated freeze/thaw cycles. Suggest spin the vial prior to opening. The antibody solution should be gently mixed before use. |
| Note                | For laboratory research only, not for drug, diagnostic or other use.   |

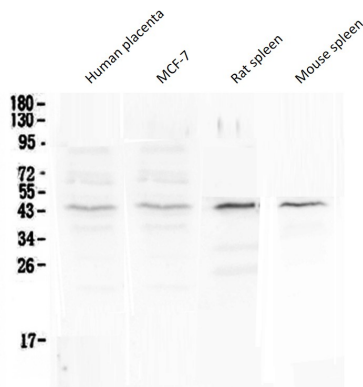
## Bioinformation

---

|                       |   |
|-----------------------|---|
| Gene Symbol           | SP6   |
| Gene Full Name        | Sp6 transcription factor  |
| Background            | SP6 belongs to a family of transcription factors that contain 3 classical zinc finger DNA-binding domains consisting of a zinc atom tetrahedrally coordinated by 2 cysteines and 2 histidines (C2H2 motif). These transcription factors bind to GC-rich sequences and related GT and CACCC boxes (Schohy et al., 2000 [PubMed 11087666]).[supplied by OMIM, Mar 2008] |
| Function              | Promotes cell proliferation. [UniProt]  |
| Calculated Mw         | 40 kDa  |
| Cellular Localization | Nucleus. [UniProt]  |

## Images

---



ARG59439 anti-SP6 antibody WB image

Western blot: 50  $\mu$ g of samples under reducing conditions. Human placenta, MCF-7, Rat spleen and Mouse spleen lysates stained with ARG59439 anti-SP6 antibody at 0.5  $\mu$ g/ml, overnight at 4°C.