

ARG59433 anti-SMC6L1 antibody

Package: 50 µg
Store at: -20°C

Summary

Product Description	Rabbit Polyclonal antibody recognizes SMC6L1
Tested Reactivity	Hu, Ms, Rat
Tested Application	FACS, ICC/IF, IHC-P, WB
Host	Rabbit
Clonality	Polyclonal
Isotype	IgG
Target Name	SMC6L1
Species	Human
Immunogen	Recombinant protein corresponding to D205-E443 of Human SMC6L1.
Conjugation	Un-conjugated
Alternate Names	SMC6L1; SMC-6; Structural maintenance of chromosomes protein 6; SMC protein 6; hSMC6

Application Instructions

Application table	Application	Dilution
	FACS	1:150 - 1:500
	ICC/IF	1:200 - 1:1000
	IHC-P	1:200 - 1:1000
	WB	0.1 - 0.5 µg/ml

Application Note IHC-P: Antigen Retrieval: Heat mediation was performed in Citrate buffer (pH 6.0) for 20 min.
* The dilutions indicate recommended starting dilutions and the optimal dilutions or concentrations should be determined by the scientist.

Properties

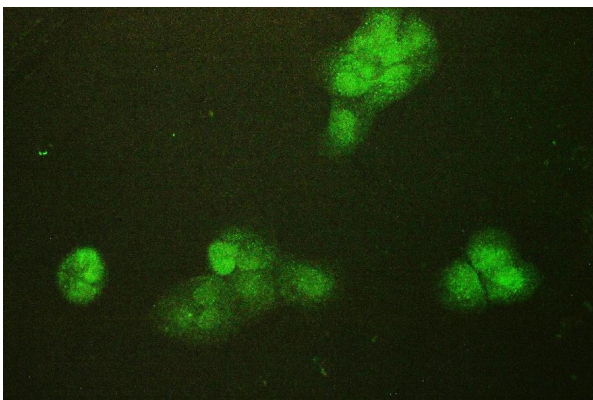
Form	Liquid
Purification	Affinity purification with immunogen.
Buffer	0.9% NaCl, 0.2% Na ₂ HPO ₄ , 0.05% Sodium azide and 4% Trehalose.
Preservative	0.05% Sodium azide
Stabilizer	4% Trehalose
Concentration	0.5 mg/ml
Storage instruction	For continuous use, store undiluted antibody at 2-8°C for up to a week. For long-term storage, aliquot and store at -20°C or below. Storage in frost free freezers is not recommended. Avoid repeated freeze/thaw cycles. Suggest spin the vial prior to opening. The antibody solution should be gently mixed before use.

Note For laboratory research only, not for drug, diagnostic or other use.

Bioinformation

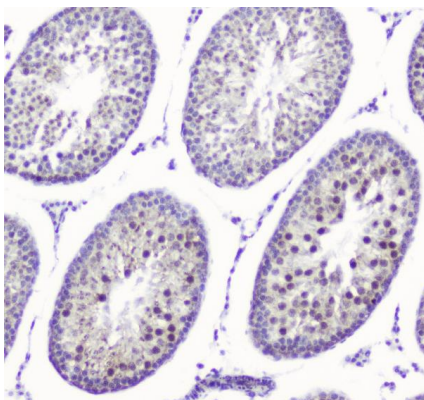
Gene Symbol	SMC6
Gene Full Name	structural maintenance of chromosomes 6
Function	Core component of the SMC5-SMC6 complex, a complex involved in DNA double-strand breaks by homologous recombination. The complex may promote sister chromatid homologous recombination by recruiting the SMC1-SMC3 cohesin complex to double-strand breaks. The complex is required for telomere maintenance via recombination in ALT (alternative lengthening of telomeres) cell lines and mediates sumoylation of shelterin complex (telosome) components which is proposed to lead to shelterin complex disassembly in ALT-associated PML bodies (APBs). Required for recruitment of telomeres to PML nuclear bodies. [UniProt]
Calculated Mw	126 kDa
PTM	Phosphorylated. Sumoylated by NSMCE2/MMS21. Ubiquitinated. (Microbial infection) SMC5-SMC6 complex is degraded by the activity of Hepatitis B X protein. [UniProt]
Cellular Localization	Nucleus. Nucleus speckle. Chromosome. Nucleus, PML body. Chromosome, telomere. [UniProt]

Images



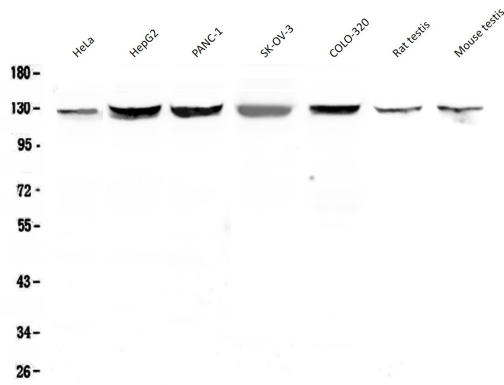
ARG59433 anti-SMC6L1 antibody ICC/IF image

Immunofluorescence: A431 cells were blocked with 10% goat serum and then stained with ARG59433 anti-SMC6L1 antibody (green) at 2 µg/ml dilution, overnight at 4°C.



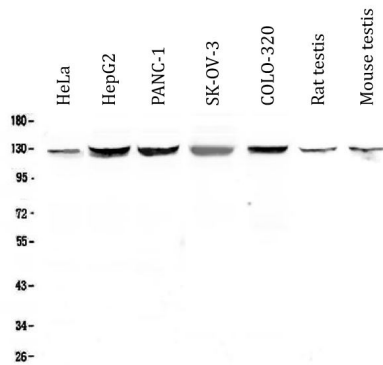
ARG59433 anti-SMC6L1 antibody IHC-P image

Immunohistochemistry: Paraffin-embedded Rat testis tissue. Antigen Retrieval: Heat mediation was performed in Citrate buffer (pH 6.0) for 20 min. The tissue section was blocked with 10% goat serum. The tissue section was then stained with ARG59433 anti-SMC6L1 antibody at 1 µg/ml dilution, overnight at 4°C.



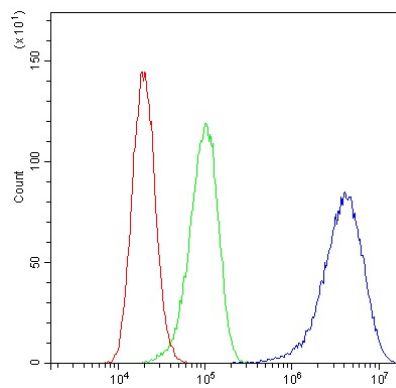
ARG59433 anti-SMC6L1 antibody WB image

Western blot: 50 µg of samples under reducing conditions. HeLa, HepG2, PANC-1, SK-OV-3, COLO-320, Rat testis and Mouse testis lysates stained with ARG59433 anti-SMC6L1 antibody at 0.5 µg/ml, overnight at 4°C.



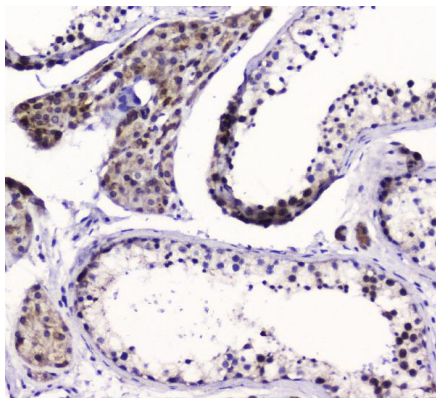
ARG59433 anti-SMC6L1 antibody WB image

Western blot: 50 µg of sample under reducing conditions. HeLa, HepG2, PANC-1, SK-OV-3, COLO-320, Rat testis and Mouse testis lysates stained with ARG59433 anti-SMC6L1 antibody at 0.5 µg/ml dilution, overnight at 4°C.



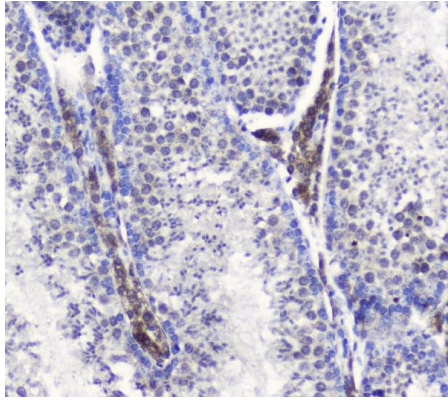
ARG59433 anti-SMC6L1 antibody FACS image

Flow Cytometry: A431 cells were blocked with 10% normal goat serum and then stained with ARG59433 anti-SMC6L1 antibody (blue) at 1 µg/10⁶ cells for 30 min at 20°C, followed by incubation with DyLight[®]488 labelled secondary antibody. Isotype control antibody (green) was rabbit IgG (1 µg/10⁶ cells) used under the same conditions. Unlabelled sample (red) was also used as a control.



ARG59433 anti-SMC6L1 antibody IHC-P image

Immunohistochemistry: Paraffin-embedded Human testis tissue. Antigen Retrieval: Heat mediation was performed in Citrate buffer (pH 6.0) for 20 min. The tissue section was blocked with 10% goat serum. The tissue section was then stained with ARG59433 anti-SMC6L1 antibody at 1 µg/ml dilution, overnight at 4°C.



ARG59433 anti-SMC6L1 antibody IHC-P image

Immunohistochemistry: Paraffin-embedded Mouse testis tissue. Antigen Retrieval: Heat mediation was performed in Citrate buffer (pH 6.0) for 20 min. The tissue section was blocked with 10% goat serum. The tissue section was then stained with ARG59433 anti-SMC6L1 antibody at 1 µg/ml dilution, overnight at 4°C.