

## ARG59431 anti-ASXL1 antibody

Package: 50 µg  
Store at: -20°C

### Summary

Product Description	Rabbit Polyclonal antibody recognizes ASXL1
Tested Reactivity	Hu, Ms
Predict Reactivity	Rat
Tested Application	FACS, WB
Host	Rabbit
Clonality	Polyclonal
Isotype	IgG
Target Name	ASXL1
Species	Human
Immunogen	Synthetic peptide corresponding to a sequence of Human ASXL1. (KKERTWAEAAARLVLENYS DAPMTPKQILQVIEAE)
Conjugation	Un-conjugated
Alternate Names	MDS; Additional sex combs-like protein 1; BOPS; Putative Polycomb group protein ASXL1

### Application Instructions

Application table	Application	Dilution
	FACS	1:150 - 1:500
	WB	0.1 - 0.5 µg/ml

**Application Note** \* The dilutions indicate recommended starting dilutions and the optimal dilutions or concentrations should be determined by the scientist.

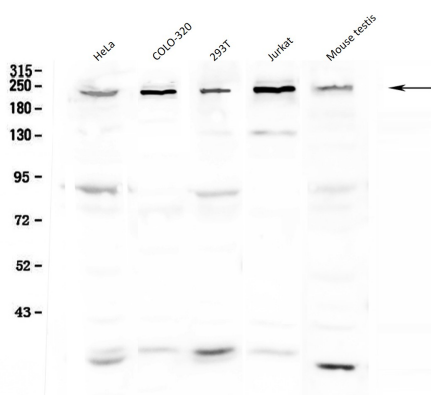
### Properties

Form	Liquid
Purification	Affinity purification with immunogen.
Buffer	0.2% Na <sub>2</sub> HPO <sub>4</sub> , 0.9% NaCl and 4% Trehalose.
Stabilizer	4% Trehalose
Concentration	0.5 mg/ml
Storage instruction	For continuous use, store undiluted antibody at 2-8°C for up to a week. For long-term storage, aliquot and store at -20°C or below. Storage in frost free freezers is not recommended. Avoid repeated freeze/thaw cycles. Suggest spin the vial prior to opening. The antibody solution should be gently mixed before use.
Note	For laboratory research only, not for drug, diagnostic or other use.

## Bioinformation

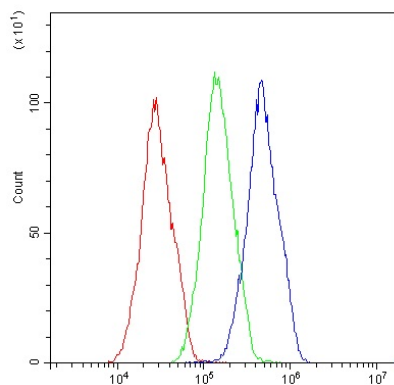
Gene Symbol	ASXL1
Gene Full Name	additional sex combs like transcriptional regulator 1
Background	This gene is similar to the Drosophila additional sex combs gene, which encodes a chromatin-binding protein required for normal determination of segment identity in the developing embryo. The protein is a member of the Polycomb group of proteins, which are necessary for the maintenance of stable repression of homeotic and other loci. The protein is thought to disrupt chromatin in localized areas, enhancing transcription of certain genes while repressing the transcription of other genes. The protein encoded by this gene functions as a ligand-dependent co-activator for retinoic acid receptor in cooperation with nuclear receptor coactivator 1. Mutations in this gene are associated with myelodysplastic syndromes and chronic myelomonocytic leukemia. Alternative splicing results in multiple transcript variants. [provided by RefSeq, Sep 2009]
Function	Probable Polycomb group (PcG) protein involved in transcriptional regulation mediated by ligand-bound nuclear hormone receptors, such as retinoic acid receptors (RARs) and peroxisome proliferator-activated receptor gamma (PPARG). Acts as coactivator of RARA and RXRA through association with NCOA1. Acts as corepressor through recruitment of KDM1A and CBX5 to target genes in a cell-type specific manner; the function seems to involve differential recruitment of methylated histone H3 to respective promoters. Acts as corepressor for PPARG and suppresses its adipocyte differentiation-inducing activity (By similarity). Non-catalytic component of the PR-DUB complex, a complex that specifically mediates deubiquitination of histone H2A monoubiquitinated at 'Lys-119' (H2AK119ub1). [UniProt]
Calculated Mw	165 kDa
Cellular Localization	Nucleus. [UniProt]

## Images



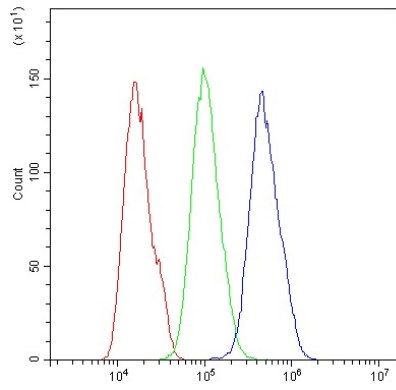
ARG59431 anti-ASXL1 antibody WB image

Western blot: 50  $\mu$ g of samples under reducing conditions. HeLa, COLO-320, 293T, Jurkat and Mouse testis lysates stained with ARG59431 anti-ASXL1 antibody at 0.5  $\mu$ g/ml, overnight at 4°C.



ARG59431 anti-ASXL1 antibody FACS image

Flow Cytometry: HepG2 cells were blocked with 10% normal goat serum and then stained with ARG59431 anti-ASXL1 antibody (blue) at 1  $\mu$ g/ $10^6$  cells for 30 min at 20°C, followed by incubation with DyLight<sup>®</sup>488 labelled secondary antibody. Isotype control antibody (green) was rabbit IgG (1  $\mu$ g/ $10^6$  cells) used under the same conditions. Unlabelled sample (red) was also used as a control.



### ARG59431 anti-ASXL1 antibody FACS image

Flow Cytometry: U2OS cells were blocked with 10% normal goat serum and then stained with ARG59431 anti-ASXL1 antibody (blue) at 1  $\mu\text{g}/10^6$  cells for 30 min at 20°C, followed by incubation with DyLight®488 labelled secondary antibody. Isotype control antibody (green) was rabbit IgG (1  $\mu\text{g}/10^6$  cells) used under the same conditions. Unlabelled sample (red) was also used as a control.