

ARG59430 anti-IL23 Receptor antibody

Package: 50 µg
Store at: -20°C

Summary

Product Description	Rabbit Polyclonal antibody recognizes IL23 Receptor
Tested Reactivity	Ms
Predict Reactivity	Rat
Tested Application	WB
Host	Rabbit
Clonality	Polyclonal
Isotype	IgG
Target Name	IL23 Receptor
Species	Mouse
Immunogen	Recombinant protein corresponding to I25-D233 of Mouse IL23 Receptor.
Conjugation	Un-conjugated
Alternate Names	Interleukin-23 receptor; IL-23R; IL-23 receptor

Application Instructions

Application table	Application	Dilution
	WB	0.1 - 0.5 µg/ml
Application Note	* The dilutions indicate recommended starting dilutions and the optimal dilutions or concentrations should be determined by the scientist.	

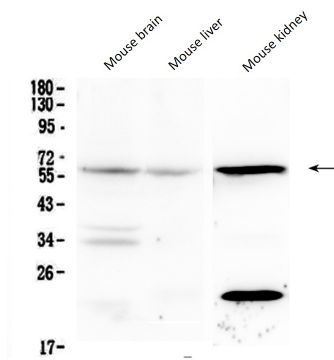
Properties

Form	Liquid
Purification	Affinity purification with immunogen.
Buffer	0.9% NaCl, 0.2% Na ₂ HPO ₄ , 0.05% Sodium azide and 5% BSA.
Preservative	0.05% Sodium azide
Stabilizer	5% BSA
Concentration	0.5 mg/ml
Storage instruction	For continuous use, store undiluted antibody at 2-8°C for up to a week. For long-term storage, aliquot and store at -20°C or below. Storage in frost free freezers is not recommended. Avoid repeated freeze/thaw cycles. Suggest spin the vial prior to opening. The antibody solution should be gently mixed before use.
Note	For laboratory research only, not for drug, diagnostic or other use.

Bioinformation

Gene Symbol	IL23R
Gene Full Name	interleukin 23 receptor
Background	The protein encoded by this gene is a subunit of the receptor for IL23A/IL23. This protein pairs with the receptor molecule IL12RB1/IL12Rbeta1, and both are required for IL23A signaling. This protein associates constitutively with Janus kinase 2 (JAK2), and also binds to transcription activator STAT3 in a ligand-dependent manner. [provided by RefSeq, Jul 2008]
Function	Associates with IL12RB1 to form the interleukin-23 receptor. Binds IL23 and mediates T-cells, NK cells and possibly certain macrophage/myeloid cells stimulation probably through activation of the Jak-Stat signaling cascade. IL23 functions in innate and adaptive immunity and may participate in acute response to infection in peripheral tissues. IL23 may be responsible for autoimmune inflammatory diseases and be important for tumorigenesis. [UniProt]
Calculated Mw	72 kDa
PTM	Phosphorylated in response to IL23. [UniProt]
Cellular Localization	Cell membrane; Single-pass type I membrane protein. [UniProt]

Images



ARG59430 anti-IL23 Receptor antibody WB image

Western blot: 50 µg of samples under reducing conditions. Mouse brain, Mouse liver and Mouse kidney lysates stained with ARG59430 anti-IL23 Receptor antibody at 0.5 µg/ml, overnight at 4°C.