

## ARG59365 anti-Keratocan antibody

Package: 100 µl  
Store at: -20°C

### Summary

Product Description	Rabbit Polyclonal antibody recognizes Keratocan
Tested Reactivity	Hu, Ms
Tested Application	WB
Host	Rabbit
Clonality	Polyclonal
Isotype	IgG
Target Name	Keratocan
Species	Human
Immunogen	KLH-conjugated synthetic peptide corresponding to aa. 228-257 of Human Keratocan.
Conjugation	Un-conjugated
Alternate Names	Keratan sulfate proteoglycan keratocan; KTN; SLRR2B; CNA2; Keratocan

### Application Instructions

Application table	Application	Dilution
	WB	1:1000
Application Note	* The dilutions indicate recommended starting dilutions and the optimal dilutions or concentrations should be determined by the scientist.	
Positive Control	Mouse eyeball	

### Properties

Form	Liquid
Purification	Purification with Protein A and immunogen peptide.
Buffer	PBS and 0.09% (W/V) Sodium azide.
Preservative	0.09% (W/V) Sodium azide.
Storage instruction	For continuous use, store undiluted antibody at 2-8°C for up to a week. For long-term storage, aliquot and store at -20°C or below. Storage in frost free freezers is not recommended. Avoid repeated freeze/thaw cycles. Suggest spin the vial prior to opening. The antibody solution should be gently mixed before use.
Note	For laboratory research only, not for drug, diagnostic or other use.

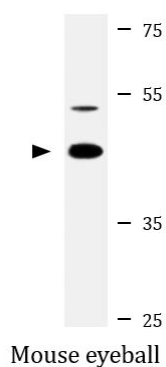
### Bioinformation

Gene Symbol	KERA
-------------	------

Gene Full Name	keratocan
Background	The protein encoded by this gene is a keratan sulfate proteoglycan that is involved in corneal transparency. Defects in this gene are a cause of autosomal recessive cornea plana 2 (CNA2).[provided by RefSeq, May 2010]
Function	May be important in developing and maintaining corneal transparency and for the structure of the stromal matrix. [UniProt]
Calculated Mw	41 kDa
PTM	Binds keratan sulfate chains. [UniProt]
Cellular Localization	Secreted, extracellular space, extracellular matrix. [UniProt]

## Images

---



ARG59365 anti-Keratocan antibody WB image

Western blot: 20 µg of Mouse eyeball lysate stained with ARG59365 anti-Keratocan antibody at 1:1000 dilution.