

ARG59364 anti-FOLR1 antibody

Package: 100 µl
Store at: -20°C

Summary

Product Description	Rabbit Polyclonal antibody recognizes FOLR1
Tested Reactivity	Hu
Tested Application	FACS, WB
Host	Rabbit
Clonality	Polyclonal
Isotype	IgG
Target Name	FOLR1
Species	Human
Immunogen	KLH-conjugated synthetic peptide corresponding to aa. 33-68 (N-terminus) of Human FOLR1.
Conjugation	Un-conjugated
Alternate Names	KB cells FBP; FBP; FOLR; Ovarian tumor-associated antigen MOv18; FR-alpha; Folate receptor alpha; Folate receptor 1; Adult folate-binding protein; Folate receptor, adult

Application Instructions

Application table	Application	Dilution
	FACS	1:10 - 1:50
	WB	1:1000
Application Note	* The dilutions indicate recommended starting dilutions and the optimal dilutions or concentrations should be determined by the scientist.	
Positive Control	HeLa	

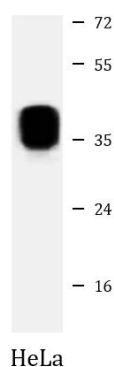
Properties

Form	Liquid
Purification	Purification with Protein A and immunogen peptide.
Buffer	PBS and 0.09% (W/V) Sodium azide.
Preservative	0.09% (W/V) Sodium azide.
Storage instruction	For continuous use, store undiluted antibody at 2-8°C for up to a week. For long-term storage, aliquot and store at -20°C or below. Storage in frost free freezers is not recommended. Avoid repeated freeze/thaw cycles. Suggest spin the vial prior to opening. The antibody solution should be gently mixed before use.
Note	For laboratory research only, not for drug, diagnostic or other use.

Bioinformation

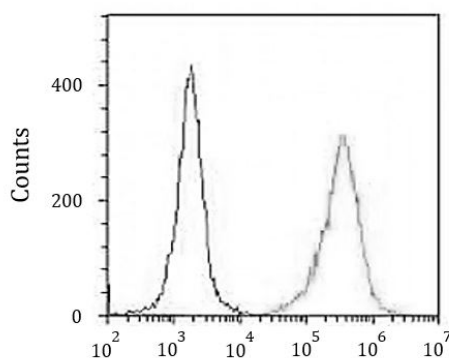
Gene Symbol	FOLR1
Gene Full Name	folate receptor 1 (adult)
Background	The protein encoded by this gene is a member of the folate receptor family. Members of this gene family bind folic acid and its reduced derivatives, and transport 5-methyltetrahydrofolate into cells. This gene product is a secreted protein that either anchors to membranes via a glycosyl-phosphatidylinositol linkage or exists in a soluble form. Mutations in this gene have been associated with neurodegeneration due to cerebral folate transport deficiency. Due to the presence of two promoters, multiple transcription start sites, and alternative splicing, multiple transcript variants encoding the same protein have been found for this gene. [provided by RefSeq, Oct 2009]
Function	Binds to folate and reduced folic acid derivatives and mediates delivery of 5-methyltetrahydrofolate and folate analogs into the interior of cells. Has high affinity for folate and folic acid analogs at neutral pH. Exposure to slightly acidic pH after receptor endocytosis triggers a conformation change that strongly reduces its affinity for folates and mediates their release. Required for normal embryonic development and normal cell proliferation. [UniProt]
Calculated Mw	30 kDa
PTM	The secreted form is derived from the membrane-bound form either by cleavage of the GPI anchor, or/and by proteolysis catalyzed by a metalloprotease. [UniProt]
Cellular Localization	Cell membrane; Lipid-anchor, GPI-anchor. Secreted. Cytoplasmic vesicle. Cytoplasmic vesicle, clathrin-coated vesicle. Endosome. Apical cell membrane. Note=Endocytosed into cytoplasmic vesicles and then recycled to the cell membrane. [UniProt]

Images



ARG59364 anti-Folate Receptor alpha antibody WB image

Western blot: 35 µg of HeLa cell lysate stained with ARG59364 anti-Folate Receptor alpha antibody at 1:1000 dilution.



ARG59364 anti-Folate Receptor alpha antibody FACS image

Flow Cytometry: HeLa cells were fixed with 2% paraformaldehyde (10 min) and then permeabilized with 90% methanol for 10 min. The cells were then incubated in 2% BSA to block non-specific protein-protein interactions and stained with ARG59364 anti-Folate Receptor alpha antibody (right histogram) at 1:25 dilution for 60 min at 37°C, followed by DyLight®488 labelled secondary antibody. Isotype control antibody (left histogram) was rabbit IgG (1 µg/10⁶ cells) used under the same conditions. Acquisition of > 10000 events was performed.