

ARG59359 anti-Involucrin antibody

Package: 100 µl
Store at: -20°C

Summary

Product Description	Rabbit Polyclonal antibody recognizes Involucrin
Tested Reactivity	Hu
Predict Reactivity	Rat
Tested Application	FACS, IHC-P, WB
Host	Rabbit
Clonality	Polyclonal
Isotype	IgG
Target Name	Involucrin
Species	Human
Immunogen	Synthetic peptide derived from Human Involucrin.
Conjugation	Un-conjugated
Alternate Names	Involucrin

Application Instructions

Application table	Application	Dilution
	FACS	1:10
	IHC-P	1:50 - 1:200
	WB	1:1000 - 1:5000
Application Note	* The dilutions indicate recommended starting dilutions and the optimal dilutions or concentrations should be determined by the scientist.	
Positive Control	A431	
Observed Size	120 ~ 130 kDa	

Properties

Form	Liquid
Purification	Affinity purified.
Buffer	PBS (pH 7.4), 0.02% Sodium azide and 50% Glycerol.
Preservative	0.02% Sodium azide
Stabilizer	50% Glycerol
Storage instruction	For continuous use, store undiluted antibody at 2-8°C for up to a week. For long-term storage, aliquot and store at -20°C. Storage in frost free freezers is not recommended. Avoid repeated freeze/thaw cycles. Suggest spin the vial prior to opening. The antibody solution should be gently mixed before use.

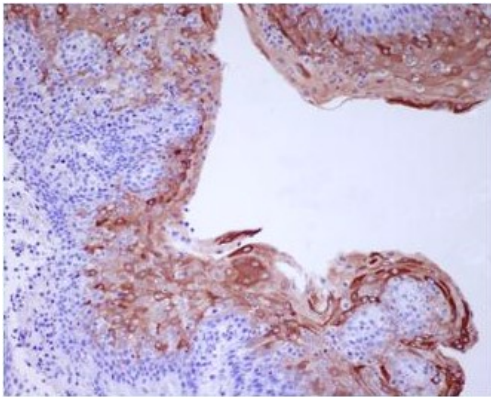
Note

For laboratory research only, not for drug, diagnostic or other use.

Bioinformation

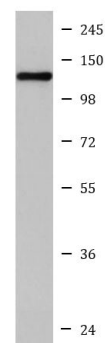
Gene Symbol	IVL
Gene Full Name	involucrin
Background	Involucrin, a component of the keratinocyte crosslinked envelope, is found in the cytoplasm and crosslinked to membrane proteins by transglutaminase. This gene is mapped to 1q21, among calpactin I light chain, trichohyalin, profillaggrin, loricrin, and calyculin. [provided by RefSeq, Jul 2008]
Function	Part of the insoluble cornified cell envelope (CE) of stratified squamous epithelia. [UniProt]
Calculated Mw	68 kDa
PTM	Substrate of transglutaminase. Some glutamines and lysines are cross-linked to other involucrin molecules, to other proteins such as keratin, desmoplakin, periplakin and envoplakin, and to lipids like omega-hydroxyceramide. [UniProt]
Cellular Localization	Cytoplasm. Note=Constituent of the scaffolding of the cornified envelope. [UniProt]

Images



ARG59359 anti-Involucrin antibody IHC-P image

Immunohistochemistry: Paraffin-embedded Human tonsil stained with ARG59359 anti-Involucrin antibody.



A431

ARG59359 anti-Involucrin antibody WB image

Western blot: A431 cell lysate stained with ARG59359 anti-Involucrin antibody.