

## ARG59341 anti-Osteocalcin antibody

Package: 50 µg  
Store at: -20°C

### Summary

Product Description	Rabbit Polyclonal antibody recognizes Osteocalcin
Tested Reactivity	Rat
Tested Application	FACS, IHC-P
Host	Rabbit
Clonality	Polyclonal
Isotype	IgG
Target Name	Osteocalcin
Species	Rat
Immunogen	Recombinant protein corresponding to Y50-V99 of Rat Osteocalcin.
Conjugation	Un-conjugated
Alternate Names	OCN; Gamma-carboxyglutamic acid-containing protein; Osteocalcin; OC; Bone Gla protein; BGP

### Application Instructions

Application table	Application	Dilution
	FACS	1 µg/10 <sup>6</sup> cells
	IHC-P	0.5 - 1 µg/ml
Application Note	IHC-P: Antigen Retrieval: Heat mediated was performed in Citrate buffer (pH 6.0) for 20 min. * The dilutions indicate recommended starting dilutions and the optimal dilutions or concentrations should be determined by the scientist.	

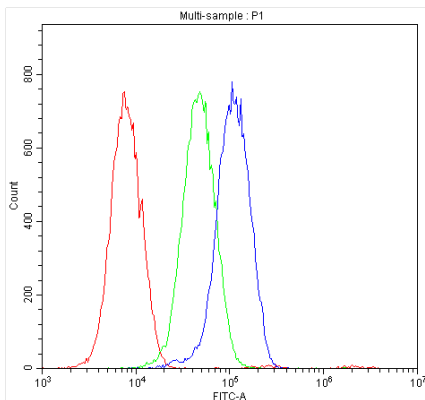
### Properties

Form	Liquid
Purification	Affinity purification with immunogen.
Buffer	0.9% NaCl, 0.2% Na <sub>2</sub> HPO <sub>4</sub> , 0.05% Sodium azide and 5% BSA.
Preservative	0.05% Sodium azide
Stabilizer	5% BSA
Concentration	0.5 mg/ml
Storage instruction	For continuous use, store undiluted antibody at 2-8°C for up to a week. For long-term storage, aliquot and store at -20°C or below. Storage in frost free freezers is not recommended. Avoid repeated freeze/thaw cycles. Suggest spin the vial prior to opening. The antibody solution should be gently mixed before use.
Note	For laboratory research only, not for drug, diagnostic or other use.

## Bioinformation

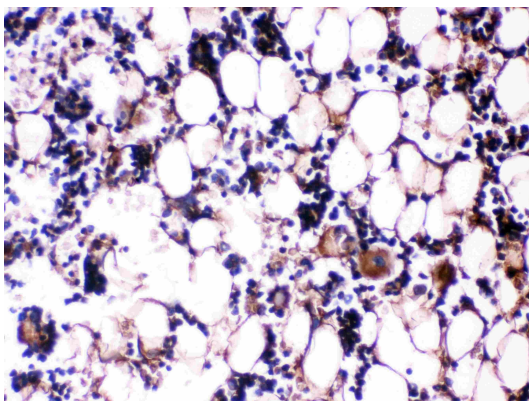
Gene Symbol	BGLAP
Gene Full Name	bone gamma-carboxyglutamate (gla) protein
Background	This gene encodes a highly abundant bone protein secreted by osteoblasts that regulates bone remodeling and energy metabolism. The encoded protein contains a Gla (gamma carboxyglutamate) domain, which functions in binding to calcium and hydroxyapatite, the mineral component of bone. Serum osteocalcin levels may be negatively correlated with metabolic syndrome. Read-through transcription exists between this gene and the neighboring upstream gene, PMF1 (polyamine-modulated factor 1), but the encoded protein only shows sequence identity with the upstream gene product. [provided by RefSeq, Jun 2015]
Function	Constitutes 1-2% of the total bone protein. It binds strongly to apatite and calcium. [UniProt]
Calculated Mw	11 kDa
PTM	Gamma-carboxyglutamate residues are formed by vitamin K dependent carboxylation. These residues are essential for the binding of calcium. [UniProt]
Cellular Localization	Secreted. [UniProt]

## Images



ARG59341 anti-Osteocalcin antibody FACS image

Flow Cytometry: L6 cells were blocked with 10% normal goat serum and then stained with ARG59341 anti-Osteocalcin antibody (blue) at 1  $\mu\text{g}/10^6$  cells for 30 min at 20°C, followed by DyLight<sup>®</sup>488 labelled secondary antibody. Isotype control antibody (green) was Rabbit IgG (1  $\mu\text{g}/10^6$  cells) used under the same conditions. Unlabelled sample (red) was also used as a control.



ARG59341 anti-Osteocalcin antibody IHC-P image

Immunohistochemistry: Paraffin-embedded Rat tibia tissue. Antigen Retrieval: Heat mediated was performed in Citrate buffer (pH 6.0, epitope retrieval solution) for 20 min. The tissue section was blocked with 10% goat serum. The tissue section was then stained with ARG59341 anti-Osteocalcin antibody at 1  $\mu\text{g}/\text{ml}$ , overnight at 4°C.