

## ARG59336 anti-RAB18 antibody

Package: 50 µg  
Store at: -20°C

### Summary

Product Description	Rabbit Polyclonal antibody recognizes RAB18
Tested Reactivity	Hu, Rat
Predict Reactivity	Bov
Tested Application	WB
Host	Rabbit
Clonality	Polyclonal
Isotype	IgG
Target Name	RAB18
Species	Human
Immunogen	Synthetic peptide corresponding to aa. 156-192 of Human RAB18. (DGVQCAFEELVEKIIQTPGLWESENQNKGVKLSHREE)
Conjugation	Un-conjugated
Alternate Names	WARBM3; RAB18L11; Ras-related protein Rab-18

### Application Instructions

Application table	Application	Dilution
	WB	0.1 - 0.5 µg/ml

**Application Note** \* The dilutions indicate recommended starting dilutions and the optimal dilutions or concentrations should be determined by the scientist.

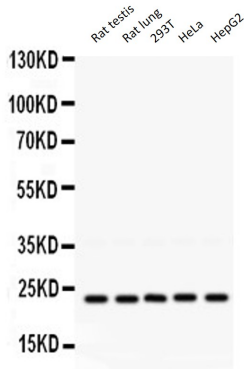
### Properties

Form	Liquid
Purification	Affinity purification with immunogen.
Buffer	0.9% NaCl, 0.2% Na <sub>2</sub> HPO <sub>4</sub> , 0.05% Sodium azide and 5% BSA.
Preservative	0.05% Sodium azide
Stabilizer	5% BSA
Concentration	0.5 mg/ml
Storage instruction	For continuous use, store undiluted antibody at 2-8°C for up to a week. For long-term storage, aliquot and store at -20°C or below. Storage in frost free freezers is not recommended. Avoid repeated freeze/thaw cycles. Suggest spin the vial prior to opening. The antibody solution should be gently mixed before use.
Note	For laboratory research only, not for drug, diagnostic or other use.

## Bioinformation

Gene Symbol	RAB18
Gene Full Name	RAB18, member RAS oncogene family
Background	The protein encoded by this gene is a member of a family of Ras-related small GTPases that regulate membrane trafficking in organelles and transport vesicles. Knockdown studies in zebrafish suggest that this protein may have a role in eye and brain development. Mutations in this gene are associated with Warburg micro syndrome type 3. Alternatively spliced transcript variants have been found for this gene. [provided by RefSeq, Jan 2012]
Function	Plays a role in apical endocytosis/recycling. May be implicated in transport between the plasma membrane and early endosomes. Plays a key role in eye and brain development and neurodegeneration. [UniProt]
Calculated Mw	23 kDa
Cellular Localization	Cell membrane; Lipid-anchor; Cytoplasmic side. [UniProt]

## Images



ARG59336 anti-RAB18 antibody WB image

Western blot: 50 µg of Rat testis, 50 µg of Rat lung, 40 µg of 293T, 40 µg of HeLa and 40 µg of HepG2 whole cell lysates stained with ARG59336 anti-RAB18 antibody at 0.5 µg/ml dilution.