

ARG59333 anti-KChIP2 antibody

Package: 50 µg
Store at: -20°C

Summary

Product Description	Rabbit Polyclonal antibody recognizes KChIP2
Tested Reactivity	Hu, Ms, Rat
Predict Reactivity	Chk
Tested Application	FACS, ICC/IF, IHC-P, WB
Host	Rabbit
Clonality	Polyclonal
Isotype	IgG
Target Name	KChIP2
Species	Human
Immunogen	Synthetic peptide corresponding to aa. 78-112 of Human KChIP2. (DEFELSTVCHRPEGLEQLQEQTkFTRKELQVLYR)
Conjugation	Un-conjugated
Alternate Names	Potassium channel-interacting protein 2; A-type potassium channel modulatory protein 2; Kv channel-interacting protein 2; Cardiac voltage-gated potassium channel modulatory subunit; KCHIP2; KCHIP2

Application Instructions

Application table	Application	Dilution
	FACS	1:150 - 1:500
	ICC/IF	1:200 - 1:1000
	IHC-P	0.5 - 1 µg/ml
	WB	0.1 - 0.5 µg/ml
Application Note	IHC-P: Antigen Retrieval: By heat mediation. * The dilutions indicate recommended starting dilutions and the optimal dilutions or concentrations should be determined by the scientist.	

Properties

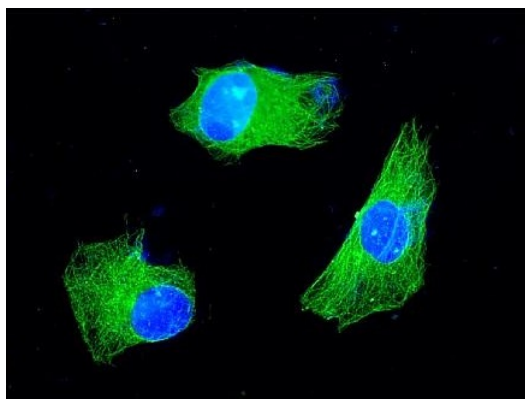
Form	Liquid
Purification	Affinity purification with immunogen.
Buffer	0.9% NaCl, 0.2% Na ₂ HPO ₄ , 0.05% Sodium azide and 5% BSA.
Preservative	0.05% Sodium azide
Stabilizer	5% BSA
Concentration	0.5 mg/ml

Storage instruction	For continuous use, store undiluted antibody at 2-8°C for up to a week. For long-term storage, aliquot and store at -20°C or below. Storage in frost free freezers is not recommended. Avoid repeated freeze/thaw cycles. Suggest spin the vial prior to opening. The antibody solution should be gently mixed before use.
Note	For laboratory research only, not for drug, diagnostic or other use.

Bioinformation

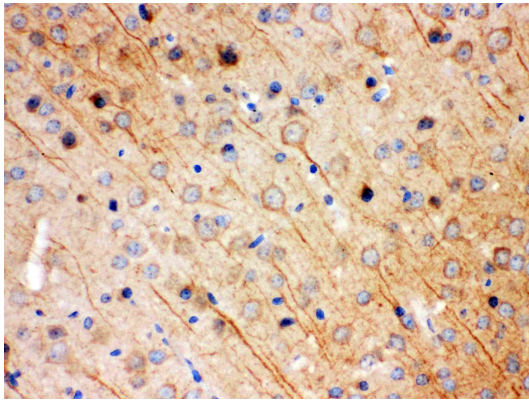
Gene Symbol	KCNIP2
Gene Full Name	Kv channel interacting protein 2
Background	This gene encodes a member of the family of voltage-gated potassium (Kv) channel-interacting proteins (KCNIPs), which belongs to the recoverin branch of the EF-hand superfamily. Members of the KCNIP family are small calcium binding proteins. They all have EF-hand-like domains, and differ from each other in the N-terminus. They are integral subunit components of native Kv4 channel complexes. They may regulate A-type currents, and hence neuronal excitability, in response to changes in intracellular calcium. Multiple alternatively spliced transcript variants encoding distinct isoforms have been identified from this gene. [provided by RefSeq, Jul 2008]
Function	Regulatory subunit of Kv4/D (Shal)-type voltage-gated rapidly inactivating A-type potassium channels. Modulates channel density, inactivation kinetics and rate of recovery from inactivation in a calcium-dependent and isoform-specific manner. In vitro, modulates KCND2/Kv4.2 and KCND3/Kv4.3 currents. Involved in KCND2 and KCND3 trafficking to the cell surface. May be required for the expression of I(To) currents in the heart (By similarity). [UniProt]
Calculated Mw	31 kDa
PTM	Palmitoylated. Palmitoylation enhances association with the plasma membrane. [UniProt]
Cellular Localization	Isoform 1: Cell membrane; Lipid-anchor. Note=Detected on lipid rafts (By similarity). Isoform 2: Cell membrane; Lipid-anchor. Isoform 6: Cell membrane; Lipid-anchor. [UniProt]

Images



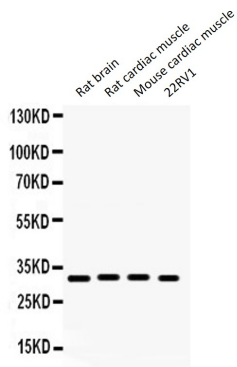
ARG59333 anti-KChIP2 antibody ICC/IF image

Immunofluorescence: SH-SY5Y cells were blocked with 10% goat serum and then stained with ARG59333 anti-KChIP2 antibody (green) at 2 µg/ml dilution, overnight at 4°C. DAPI (blue) for nuclear staining.



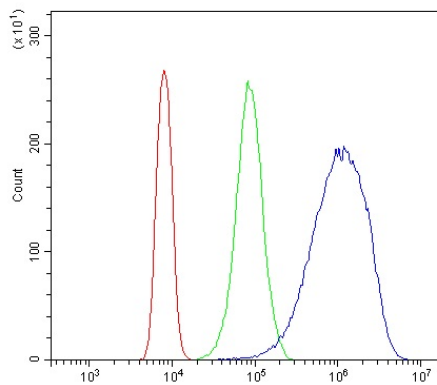
ARG59333 anti-KChIP2 antibody IHC-P image

Immunohistochemistry: Paraffin-embedded Mouse brain stained with ARG59333 anti-KChIP2 antibody.



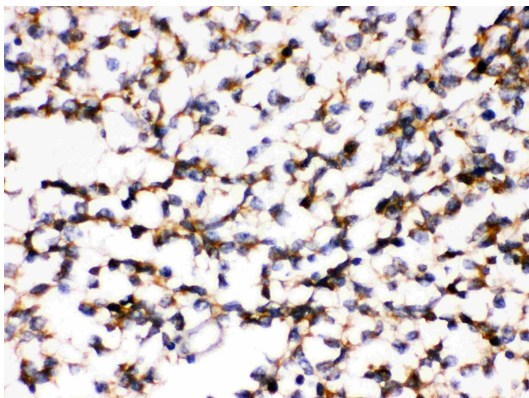
ARG59333 anti-KChIP2 antibody WB image

Western blot: 50 ug of Rat brain, 50 ug of Rat cardiac muscle, 50 ug of Mouse cardiac muscle and 40 ug of 22RV1 whole cell lysates stained with ARG59333 anti-KChIP2 antibody at 0.5 ug/ml dilution.



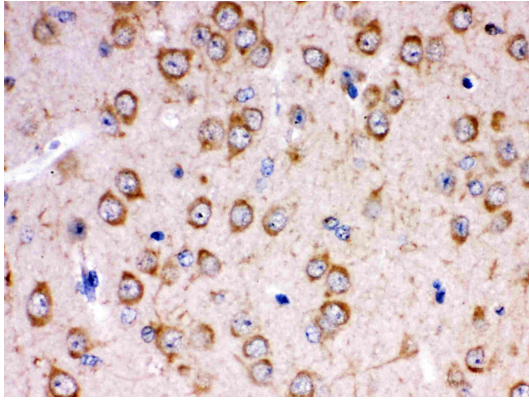
ARG59333 anti-KChIP2 antibody FACS image

Flow Cytometry: K562 cells were blocked with 10% normal goat serum and then stained with ARG59333 anti-KChIP2 antibody (blue) at $1 \mu\text{g}/10^6$ cells for 30 min at 20°C , followed by incubation with DyLight[®]488 labelled secondary antibody. Isotype control antibody (green) was rabbit IgG ($1 \mu\text{g}/10^6$ cells) used under the same conditions. Unlabelled sample (red) was also used as a control.



ARG59333 anti-KChIP2 antibody IHC-P image

Immunohistochemistry: Paraffin-embedded Human glioma stained with ARG59333 anti-KChIP2 antibody.



ARG59333 anti-KChIP2 antibody IHC-P image

Immunohistochemistry: Paraffin-embedded Rat brain stained with ARG59333 anti-KChIP2 antibody.