

ARG59308 anti-CDR2 antibody

Package: 50 µg
Store at: -20°C

Summary

Product Description	Rabbit Polyclonal antibody recognizes CDR2
Tested Reactivity	Hu, Ms
Tested Application	WB
Host	Rabbit
Clonality	Polyclonal
Isotype	IgG
Target Name	CDR2
Species	Human
Immunogen	Synthetic peptide corresponding to aa. 232-265 of Human CDR2. (ELEQLGATGAYRARALELEAEVAEMRQLQSEH)
Conjugation	Un-conjugated
Alternate Names	Yo; CDR62

Application Instructions

Application table	Application	Dilution
	WB	0.1 - 0.5 µg/ml

Application Note * The dilutions indicate recommended starting dilutions and the optimal dilutions or concentrations should be determined by the scientist.

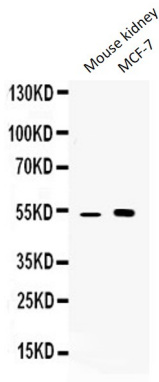
Properties

Form	Liquid
Purification	Affinity purification with immunogen.
Buffer	0.9% NaCl, 0.2% Na ₂ HPO ₄ , 0.05% Sodium azide and 5% BSA.
Preservative	0.05% Sodium azide
Stabilizer	5% BSA
Concentration	0.5 mg/ml
Storage instruction	For continuous use, store undiluted antibody at 2-8°C for up to a week. For long-term storage, aliquot and store at -20°C or below. Storage in frost free freezers is not recommended. Avoid repeated freeze/thaw cycles. Suggest spin the vial prior to opening. The antibody solution should be gently mixed before use.
Note	For laboratory research only, not for drug, diagnostic or other use.

Bioinformation

Gene Symbol	CDR2
Gene Full Name	cerebellar degeneration related protein 2
Calculated Mw	52 kDa

Images



ARG59308 anti-CDR2 antibody WB image

Western blot: Mouse kidney and MCF-7 whole cell lysates stained with ARG59308 anti-CDR2 antibody at 0.5 μ g/ml dilution.