

ARG59302 anti-POLI / DNA Polymerase Iota antibody

Package: 50 µg
Store at: -20°C

Summary

Product Description	Rabbit Polyclonal antibody recognizes POLI / DNA Polymerase Iota
Tested Reactivity	Hu, Ms, Rat
Tested Application	WB
Host	Rabbit
Clonality	Polyclonal
Isotype	IgG
Target Name	POLI / DNA Polymerase Iota
Species	Human
Immunogen	Synthetic peptide corresponding to a sequence of Human POLI / DNA Polymerase Iota. (DIDPQVFYELPEAVQKELLAEWKCRAGSDFHGHK)
Conjugation	Un-conjugated
Alternate Names	RAD30B; Eta2; RAD30B; DNA polymerase Iota; EC 2.7.7.7; RAD30 homolog B

Application Instructions

Application table	Application	Dilution
	WB	0.1 - 0.5 µg/ml

Application Note * The dilutions indicate recommended starting dilutions and the optimal dilutions or concentrations should be determined by the scientist.

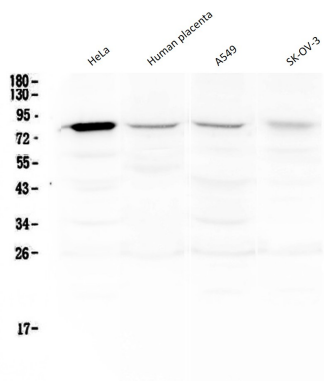
Properties

Form	Liquid
Purification	Affinity purification with immunogen.
Buffer	0.9% NaCl, 0.2% Na ₂ HPO ₄ , 0.05% Sodium azide and 4% Trehalose.
Preservative	0.05% Sodium azide
Stabilizer	4% Trehalose
Concentration	0.5 mg/ml
Storage instruction	For continuous use, store undiluted antibody at 2-8°C for up to a week. For long-term storage, aliquot and store at -20°C or below. Storage in frost free freezers is not recommended. Avoid repeated freeze/thaw cycles. Suggest spin the vial prior to opening. The antibody solution should be gently mixed before use.
Note	For laboratory research only, not for drug, diagnostic or other use.

Bioinformation

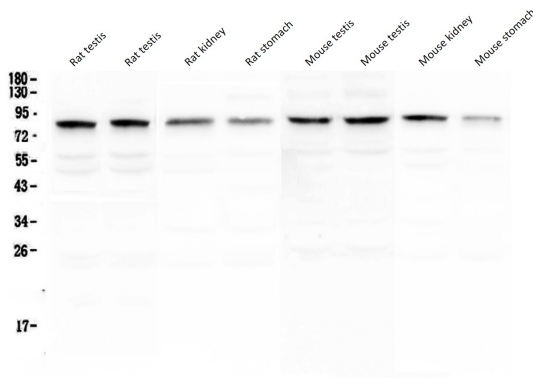
Gene Symbol	POLI
Gene Full Name	polymerase (DNA directed) iota
Function	Error-prone DNA polymerase specifically involved in DNA repair. Plays an important role in translesion synthesis, where the normal high-fidelity DNA polymerases cannot proceed and DNA synthesis stalls. Favors Hoogsteen base-pairing in the active site. Inserts the correct base with high-fidelity opposite an adenosine template. Exhibits low fidelity and efficiency opposite a thymidine template, where it will preferentially insert guanosine. May play a role in hypermutation of immunoglobulin genes. Forms a Schiff base with 5'-deoxyribose phosphate at abasic sites, but may not have lyase activity. [UniProt]
Calculated Mw	83 kDa
Cellular Localization	Nucleus. Note=Accumulates at replication forks after DNA damage. [UniProt]

Images



ARG59302 anti-POLI / DNA Polymerase Iota antibody WB image

Western blot: 50 µg of samples under reducing conditions. HeLa, Human placenta, A549 and SK-OV-3 cell lysates stained with ARG59302 anti-POLI / DNA Polymerase Iota antibody at 0.5 µg/ml, overnight at 4°C.



ARG59302 anti-POLI / DNA Polymerase Iota antibody WB image

Western blot: 50 µg of samples under reducing conditions. Rat testis, Rat testis, Rat kidney, Rat stomach, Mouse testis, Mouse testis, Mouse kidney and Mouse stomach lysates stained with ARG59302 anti-POLI / DNA Polymerase Iota antibody at 0.5 µg/ml, overnight at 4°C.