

ARG59245 anti-PREB antibody

Package: 50 µl
Store at: -20°C

Summary

Product Description	Rabbit Polyclonal antibody recognizes PREB
Tested Reactivity	Ms
Predict Reactivity	Hu, Rat, Cow, Dog, Gpig, Hrs, Pig, Rb, Zfsh
Tested Application	WB
Host	Rabbit
Clonality	Polyclonal
Isotype	IgG
Target Name	PREB
Species	Mouse
Immunogen	Synthetic peptide around the N-terminal region of Mouse PREB. (within the following region: RRRGVELYRAPFPLYALRIDPKTGLLIAAGGGGAAKTGIKNGVHFLQLEL)
Conjugation	Un-conjugated
Alternate Names	Prolactin regulatory element-binding protein; SEC12; Mammalian guanine nucleotide exchange factor mSec12

Application Instructions

Predict Reactivity Note	Predicted Homology Based On Immunogen Sequence: Cow: 100%; Dog: 100%; Guinea Pig: 86%; Horse: 100%; Human: 100%; Pig: 100%; Rabbit: 100%; Rat: 100%; Zebrafish: 86%				
Application table	<table><thead><tr><th>Application</th><th>Dilution</th></tr></thead><tbody><tr><td>WB</td><td>1 µg/ml</td></tr></tbody></table>	Application	Dilution	WB	1 µg/ml
Application	Dilution				
WB	1 µg/ml				
Application Note	* The dilutions indicate recommended starting dilutions and the optimal dilutions or concentrations should be determined by the scientist.				
Observed Size	~ 45 kDa				

Properties

Form	Liquid
Purification	Affinity purified.
Buffer	PBS, 0.09% (w/v) Sodium azide and 2% Sucrose.
Preservative	0.09% (w/v) Sodium azide
Stabilizer	2% Sucrose
Concentration	Batch dependent: 0.5 - 1 mg/ml
Storage instruction	For continuous use, store undiluted antibody at 2-8°C for up to a week. For long-term storage, aliquot and store at -20°C or below. Storage in frost free freezers is not recommended. Avoid repeated

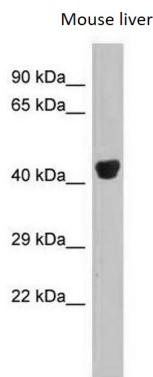
freeze/thaw cycles. Suggest spin the vial prior to opening. The antibody solution should be gently mixed before use.

Note For laboratory research only, not for drug, diagnostic or other use.

Bioinformation

Gene Symbol	PREB
Gene Full Name	prolactin regulatory element binding
Background	This gene encodes a protein that specifically binds to a Pit1-binding element of the prolactin (PRL) promoter. This protein may act as a transcriptional regulator and is thought to be involved in some of the developmental abnormalities observed in patients with partial trisomy 2p. This gene overlaps the abhydrolase domain containing 1 (ABHD1) gene on the opposite strand. [provided by RefSeq, Jul 2008]
Function	Was first identified based on its probable role in the regulation of pituitary gene transcription. Binds to the prolactin gene (PRL) promoter and seems to activate transcription (By similarity). Guanine nucleotide exchange factor that activates SARA2. Required for the formation of COPII transport vesicles from the ER. [UniProt]
Calculated Mw	45 kDa
Cellular Localization	Endoplasmic reticulum membrane; Single-pass membrane protein. Nucleus. Note=Concentrates at endoplasmic reticulum exit sites. [UniProt]

Images



ARG59245 anti-PREB antibody WB image

Western blot: Mouse liver lysate stained with ARG59245 anti-PREB antibody at 1.0 µg/ml dilution.