

## ARG59220 anti-YES1 antibody

Package: 50 µg  
Store at: -20°C

### Summary

Product Description	Rabbit Polyclonal antibody recognizes YES1
Tested Reactivity	Hu
Tested Application	IHC-P, WB
Host	Rabbit
Clonality	Polyclonal
Isotype	IgG
Target Name	YES1
Species	Human
Immunogen	Synthetic peptide corresponding to aa. 7-35 of Human YES1. (KENKSPAIKYRPENTPEPVSTSVSHYGAE)
Conjugation	Un-conjugated
Alternate Names	HsT441; Proto-oncogene c-Yes; Tyrosine-protein kinase Yes; c-yes; Yes; P61-YES; p61-Yes; EC 2.7.10.2

### Application Instructions

Application table	Application	Dilution
	IHC-P	0.5 - 1 µg/ml
	WB	0.1 - 0.5 µg/ml
Application Note	IHC-P: Antigen Retrieval: By heat mediation. * The dilutions indicate recommended starting dilutions and the optimal dilutions or concentrations should be determined by the scientist.	

### Properties

Form	Liquid
Purification	Affinity purification with immunogen.
Buffer	0.9% NaCl, 0.2% Na <sub>2</sub> HPO <sub>4</sub> , 0.05% Sodium azide and 5% BSA.
Preservative	0.05% Sodium azide
Stabilizer	5% BSA
Concentration	0.5 mg/ml
Storage instruction	For continuous use, store undiluted antibody at 2-8°C for up to a week. For long-term storage, aliquot and store at -20°C or below. Storage in frost free freezers is not recommended. Avoid repeated freeze/thaw cycles. Suggest spin the vial prior to opening. The antibody solution should be gently mixed before use.
Note	For laboratory research only, not for drug, diagnostic or other use.

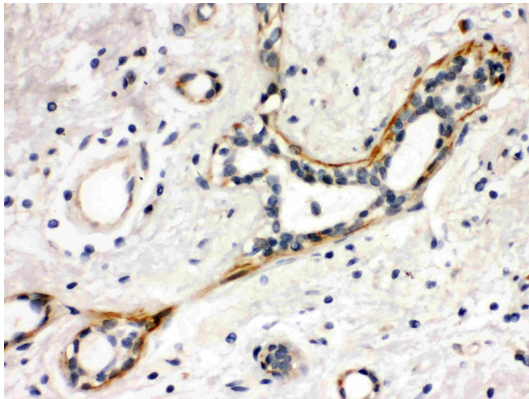
## Bioinformation

---

Gene Symbol	YES1
Gene Full Name	YES proto-oncogene 1, Src family tyrosine kinase
Background	This gene is the cellular homolog of the Yamaguchi sarcoma virus oncogene. The encoded protein has tyrosine kinase activity and belongs to the src family of proteins. This gene lies in close proximity to thymidylate synthase gene on chromosome 18, and a corresponding pseudogene has been found on chromosome 22. [provided by RefSeq, Jul 2008]
Function	Non-receptor protein tyrosine kinase that is involved in the regulation of cell growth and survival, apoptosis, cell-cell adhesion, cytoskeleton remodeling, and differentiation. Stimulation by receptor tyrosine kinases (RTKs) including EGRF, PDGFR, CSF1R and FGFR leads to recruitment of YES1 to the phosphorylated receptor, and activation and phosphorylation of downstream substrates. Upon EGFR activation, promotes the phosphorylation of PARD3 to favor epithelial tight junction assembly. Participates in the phosphorylation of specific junctional components such as CTNND1 by stimulating the FYN and FER tyrosine kinases at cell-cell contacts. Upon T-cell stimulation by CXCL12, phosphorylates collapsin response mediator protein 2/DPYSL2 and induces T-cell migration. Participates in CD95L/FASLG signaling pathway and mediates AKT-mediated cell migration. Plays a role in cell cycle progression by phosphorylating the cyclin-dependent kinase 4/CDK4 thus regulating the G1 phase. Also involved in G2/M progression and cytokinesis. [UniProt]
Calculated Mw	61 kDa
PTM	Phosphorylation by CSK on the C-terminal tail maintains the enzyme in an inactive state. Autophosphorylation at Tyr-426 maintains enzyme activity by blocking CSK-mediated inhibition.  Palmitoylation at Cys-3 promotes membrane localization. [UniProt]
Cellular Localization	Cell membrane. Cytoplasm, cytoskeleton, microtubule organizing center, centrosome. Cytoplasm, cytosol. Note=Newly synthesized protein initially accumulates in the Golgi region and traffics to the plasma membrane through the exocytic pathway. [UniProt]

## Images

---



ARG59220 anti-YES1 antibody IHC-P image

Immunohistochemistry: Paraffin-embedded Human mammary cancer stained with ARG59220 anti-YES1 antibody.

### ARG59220 anti-YES1 antibody WB image

Western blot: 40 µg of SGC, A549 and HepG2 whole cell lysates stained with ARG59220 anti-YES1 antibody at 0.5 µg/ml dilution.

