

ARG59216 anti-Semaphorin 3A antibody

Package: 50 µg
Store at: -20°C

Summary

Product Description	Rabbit Polyclonal antibody recognizes Semaphorin 3A
Tested Reactivity	Hu
Tested Application	WB
Host	Rabbit
Clonality	Polyclonal
Isotype	IgG
Target Name	Semaphorin 3A
Species	Human
Immunogen	Recombinant protein corresponding to K550-V771 of Human Semaphorin 3A.
Conjugation	Un-conjugated
Alternate Names	Sema III; Semaphorin III; SEMA1; SemD; Hsema-I; HH16; Hsema-III; COLL1; SEMAL; Semaphorin-3A; coll-1; SEMAIII; SEMAD

Application Instructions

Application table	Application	Dilution
	WB	0.1 - 0.5 µg/ml
Application Note	* The dilutions indicate recommended starting dilutions and the optimal dilutions or concentrations should be determined by the scientist.	

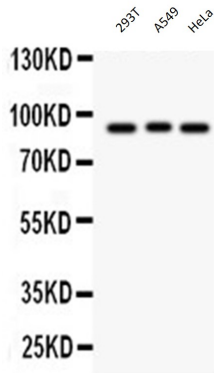
Properties

Form	Liquid
Purification	Affinity purification with immunogen.
Buffer	0.9% NaCl, 0.2% Na ₂ HPO ₄ , 0.05% Sodium azide and 5% BSA.
Preservative	0.05% Sodium azide
Stabilizer	5% BSA
Concentration	0.5 mg/ml
Storage instruction	For continuous use, store undiluted antibody at 2-8°C for up to a week. For long-term storage, aliquot and store at -20°C or below. Storage in frost free freezers is not recommended. Avoid repeated freeze/thaw cycles. Suggest spin the vial prior to opening. The antibody solution should be gently mixed before use.
Note	For laboratory research only, not for drug, diagnostic or other use.

Bioinformation

Gene Symbol	SEMA3A
Gene Full Name	sema domain, immunoglobulin domain (Ig), short basic domain, secreted, (semaphorin) 3A
Background	This gene is a member of the semaphorin family and encodes a protein with an Ig-like C2-type (immunoglobulin-like) domain, a PSI domain and a Sema domain. This secreted protein can function as either a chemorepulsive agent, inhibiting axonal outgrowth, or as a chemoattractive agent, stimulating the growth of apical dendrites. In both cases, the protein is vital for normal neuronal pattern development. Increased expression of this protein is associated with schizophrenia and is seen in a variety of human tumor cell lines. Also, aberrant release of this protein is associated with the progression of Alzheimer's disease. [provided by RefSeq, Jul 2008]
Function	Involved in the development of the olfactory system and in neuronal control of puberty. Induces the collapse and paralysis of neuronal growth cones. Could serve as a ligand that guides specific growth cones by a motility-inhibiting mechanism. Binds to the complex neuropilin-1/plexin-1. [UniProt]
Calculated Mw	89 kDa
Cellular Localization	Secreted. [UniProt]

Images



ARG59216 anti-Semaphorin 3A antibody WB image

Western blot: 40 μ g of 293T, A549 and HeLa whole cell lysates stained with ARG59216 anti-Semaphorin 3A antibody at 0.5 μ g/ml dilution.