

## ARG59204 anti-Regucalcin antibody

Package: 50 µg  
Store at: -20°C

### Summary

Product Description	Rabbit Polyclonal antibody recognizes Regucalcin
Tested Reactivity	Ms, Rat
Tested Application	IHC-P
Host	Rabbit
Clonality	Polyclonal
Isotype	IgG
Target Name	Regucalcin
Species	Human
Immunogen	Synthetic peptide corresponding to a sequence of Human Regucalcin. (YSVDAFDYDLQTGQISNRRSVYKLEKEEQIPD)
Conjugation	Un-conjugated
Alternate Names	EC 3.1.1.17; Senescence marker protein 30; Gluconolactonase; Regucalcin; HEL-S-41; SMP-30; SMP30; RC; GNL

### Application Instructions

Application table	Application	Dilution
	IHC-P	0.5 - 1 µg/ml
Application Note	IHC-P: Antigen Retrieval: Heat mediated was performed in Citrate buffer (pH 6.0) for 20 min. * The dilutions indicate recommended starting dilutions and the optimal dilutions or concentrations should be determined by the scientist.	

### Properties

Form	Liquid
Purification	Affinity purification with immunogen.
Buffer	0.9% NaCl, 0.2% Na <sub>2</sub> HPO <sub>4</sub> , 0.05% Sodium azide and 4% Trehalose.
Preservative	0.05% Sodium azide
Stabilizer	4% Trehalose
Concentration	0.5 mg/ml
Storage instruction	For continuous use, store undiluted antibody at 2-8°C for up to a week. For long-term storage, aliquot and store at -20°C or below. Storage in frost free freezers is not recommended. Avoid repeated freeze/thaw cycles. Suggest spin the vial prior to opening. The antibody solution should be gently mixed before use.
Note	For laboratory research only, not for drug, diagnostic or other use.

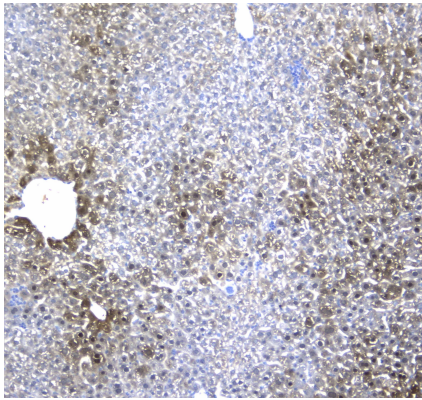
## Bioinformation

---

Gene Symbol	RGN
Gene Full Name	regucalcin
Background	The protein encoded by this gene is a highly conserved, calcium-binding protein, that is preferentially expressed in the liver and kidney. It may have an important role in calcium homeostasis. Studies in rat indicate that this protein may also play a role in aging, as it shows age-associated down-regulation. This gene is part of a gene cluster on chromosome Xp11.3-Xp11.23. Alternative splicing results in multiple transcript variants. [provided by RefSeq, Sep 2013]
Function	Gluconolactonase with low activity towards other sugar lactones, including gulonolactone and galactonolactone. Can also hydrolyze diisopropyl phosphorofluoridate and phenylacetate (in vitro). Calcium-binding protein. Modulates Ca(2+) signaling, and Ca(2+)-dependent cellular processes and enzyme activities (By similarity). [UniProt]
Calculated Mw	33 kDa
Cellular Localization	Cytoplasm. [UniProt]

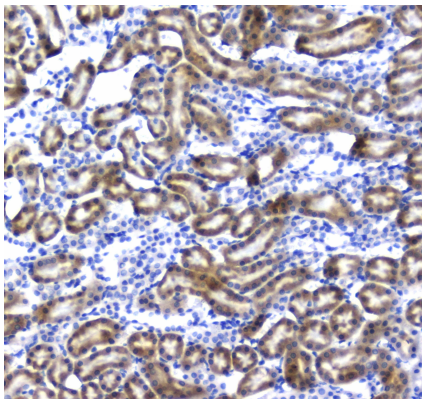
## Images

---



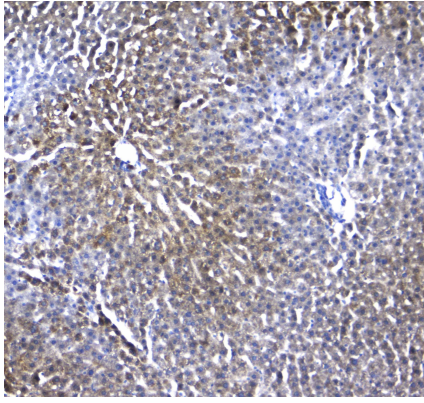
ARG59204 anti-Regucalcin antibody IHC-P image

Immunohistochemistry: Paraffin-embedded Mouse liver tissue. Antigen Retrieval: Heat mediated was performed in Citrate buffer (pH 6.0, epitope retrieval solution) for 20 min. The tissue section was blocked with 10% goat serum. The tissue section was then stained with ARG59204 anti-Regucalcin antibody at 1 µg/ml dilution, overnight at 4°C.



ARG59204 anti-Regucalcin antibody IHC-P image

Immunohistochemistry: Paraffin-embedded Rat kidney tissue. Antigen Retrieval: Heat mediated was performed in Citrate buffer (pH 6.0, epitope retrieval solution) for 20 min. The tissue section was blocked with 10% goat serum. The tissue section was then stained with ARG59204 anti-Regucalcin antibody at 1 µg/ml dilution, overnight at 4°C.



#### ARG59204 anti-Regucalcin antibody IHC-P image

Immunohistochemistry: Paraffin-embedded Rat liver tissue. Antigen Retrieval: Heat mediated was performed in Citrate buffer (pH 6.0, epitope retrieval solution) for 20 min. The tissue section was blocked with 10% goat serum. The tissue section was then stained with ARG59204 anti-Regucalcin antibody at 1  $\mu\text{g}/\text{ml}$  dilution, overnight at 4°C.