

ARG59176 anti-MED14 antibody

Package: 100 µl
Store at: -20°C

Summary

Product Description	Rabbit Polyclonal antibody recognizes MED14
Tested Reactivity	Hu, Ms
Tested Application	FACS, WB
Host	Rabbit
Clonality	Polyclonal
Isotype	IgG
Target Name	MED14
Species	Human
Immunogen	KLH-conjugated synthetic peptide corresponding to aa. 586-615 of Human MED14.
Conjugation	Un-conjugated
Alternate Names	CSRP; Transcriptional coactivator CRSP150; TRAP170; RGR1; Mediator complex subunit 14; Thyroid hormone receptor-associated protein complex 170 kDa component; CRSP complex subunit 2; CXorf4; Vitamin D3 receptor-interacting protein complex 150 kDa component; DRIP150; CRSP150; ARC150; CRSP2; EXLM1; RGR1 homolog; Trap170; hRGR1; Activator-recruited cofactor 150 kDa component; Cofactor required for Sp1 transcriptional activation subunit 2; Mediator of RNA polymerase II transcription subunit 14

Application Instructions

Application table	Application	Dilution
	FACS	1:25
	WB	1:1000
Application Note	* The dilutions indicate recommended starting dilutions and the optimal dilutions or concentrations should be determined by the scientist.	
Positive Control	DU145	

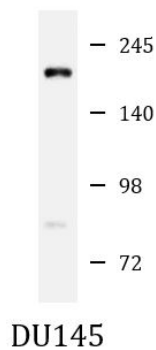
Properties

Form	Liquid
Purification	Purification with Protein A and immunogen peptide.
Buffer	PBS and 0.09% (W/V) Sodium azide.
Preservative	0.09% (W/V) Sodium azide.
Storage instruction	For continuous use, store undiluted antibody at 2-8°C for up to a week. For long-term storage, aliquot and store at -20°C or below. Storage in frost free freezers is not recommended. Avoid repeated freeze/thaw cycles. Suggest spin the vial prior to opening. The antibody solution should be gently mixed before use.

Bioinformation

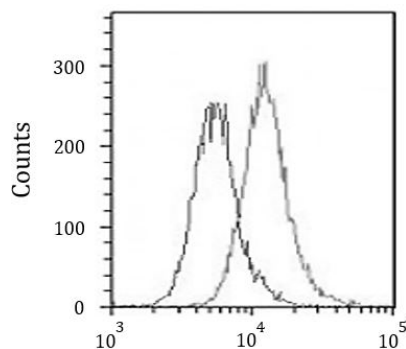
Gene Symbol	MED14
Gene Full Name	mediator complex subunit 14
Background	The activation of gene transcription is a multistep process that is triggered by factors that recognize transcriptional enhancer sites in DNA. These factors work with co-activators to direct transcriptional initiation by the RNA polymerase II apparatus. The protein encoded by this gene is a subunit of the CRSP (cofactor required for SP1 activation) complex, which, along with TFIID, is required for efficient activation by SP1. This protein is also a component of other multisubunit complexes e.g. thyroid hormone receptor-(TR-) associated proteins which interact with TR and facilitate TR function on DNA templates in conjunction with initiation factors and cofactors. This protein contains a bipartite nuclear localization signal. This gene is known to escape chromosome X-inactivation. [provided by RefSeq, Jul 2008]
Function	Component of the Mediator complex, a coactivator involved in the regulated transcription of nearly all RNA polymerase II-dependent genes. Mediator functions as a bridge to convey information from gene-specific regulatory proteins to the basal RNA polymerase II transcription machinery. Mediator is recruited to promoters by direct interactions with regulatory proteins and serves as a scaffold for the assembly of a functional preinitiation complex with RNA polymerase II and the general transcription factors. [UniProt]
Calculated Mw	161 kDa
Cellular Localization	Nucleus. [UniProt]

Images



ARG59176 anti-MED14 antibody WB image

Western blot: 20 μ g of DU145 cell lysate stained with ARG59176 anti-MED14 antibody at 1:4000 dilution.



ARG59176 anti-MED14 antibody FACS image

Flow Cytometry: A549 cells were fixed with 2% paraformaldehyde (10 min) and then permeabilized with 90% methanol for 10 min. The cells were then incubated in 2% BSA to block non-specific protein-protein interactions followed by ARG59176 anti-MED14 antibody (right histogram) at 1:25 for 60 min at 37°C, followed by DyLight®488 labelled secondary antibody. Isotype control antibody (left histogram) was rabbit IgG1 (1 μ g/ 10^6 cells) used under the same conditions. Acquisition of >10000 events was performed.