

ARG59168 anti-CCDC6 antibody

Package: 100 µl
Store at: -20°C

Summary

Product Description	Rabbit Polyclonal antibody recognizes CCDC6
Tested Reactivity	Hu, Ms, Rat
Tested Application	ICC/IF, IHC-P, WB
Host	Rabbit
Clonality	Polyclonal
Isotype	IgG
Target Name	CCDC6
Species	Human
Immunogen	Recombinant fusion protein corresponding to aa. 55-222 of Human CCDC6 (NP_005427.2).
Conjugation	Un-conjugated
Alternate Names	TPC; PTC; D10S170; H4; Papillary thyroid carcinoma-encoded protein; Coiled-coil domain-containing protein 6; Protein H4; TST1

Application Instructions

Application table	Application	Dilution
	ICC/IF	1:50 - 1:200
	IHC-P	1:50 - 1:200
	WB	1:500 - 1:2000
Application Note	* The dilutions indicate recommended starting dilutions and the optimal dilutions or concentrations should be determined by the scientist.	
Positive Control	Jurkat	
Observed Size	~ 68 kDa	

Properties

Form	Liquid
Purification	Affinity purified.
Buffer	PBS (pH 7.3), 0.02% Sodium azide and 50% Glycerol.
Preservative	0.02% Sodium azide
Stabilizer	50% Glycerol
Storage instruction	For continuous use, store undiluted antibody at 2-8°C for up to a week. For long-term storage, aliquot and store at -20°C. Storage in frost free freezers is not recommended. Avoid repeated freeze/thaw cycles. Suggest spin the vial prior to opening. The antibody solution should be gently mixed before use.

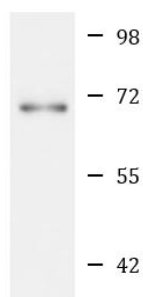
Note

For laboratory research only, not for drug, diagnostic or other use.

Bioinformation

Gene Symbol	CCDC6
Gene Full Name	coiled-coil domain containing 6
Background	This gene encodes a coiled-coil domain-containing protein. The encoded protein is ubiquitously expressed and may function as a tumor suppressor. A chromosomal rearrangement resulting in the expression of a fusion gene containing a portion of this gene and the intracellular kinase-encoding domain of the ret proto-oncogene is the cause of thyroid papillary carcinoma.[provided by RefSeq, Sep 2010]
Calculated Mw	53 kDa
Cellular Localization	Cytoplasm. Cytoplasm, cytoskeleton. Note=May be a cytoskeletal protein. [UniProt]

Images



Jurkat

ARG59168 anti-CCDC6 antibody WB image

Western blot: 25 µg of Jurkat cell lysate stained with ARG59168 anti-CCDC6 antibody at 1:1000 dilution.