

ARG59165 anti-GOLGA5 antibody

Package: 100 µl
Store at: -20°C

Summary

Product Description	Rabbit Polyclonal antibody recognizes GOLGA5
Tested Reactivity	Hu, Ms, Rat
Tested Application	ICC/IF, WB
Host	Rabbit
Clonality	Polyclonal
Isotype	IgG
Target Name	GOLGA5
Species	Human
Immunogen	Recombinant fusion protein corresponding to aa. 1-300 of Human GOLGA5 (NP_005104.3).
Conjugation	Un-conjugated
Alternate Names	Golgin subfamily A member 5; Protein Ret-II; ret-II; Golgin-84; RET-fused gene 5 protein; GOLIM5; RFG5; Cell proliferation-inducing gene 31 protein

Application Instructions

Application table	Application	Dilution
	ICC/IF	1:50 - 1:200
	WB	1:500 - 1:2000
Application Note	* The dilutions indicate recommended starting dilutions and the optimal dilutions or concentrations should be determined by the scientist.	
Positive Control	HeLa	
Observed Size	100 kDa, 115 kDa	

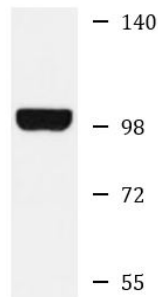
Properties

Form	Liquid
Purification	Affinity purified.
Buffer	PBS (pH 7.3), 0.02% Sodium azide and 50% Glycerol.
Preservative	0.02% Sodium azide
Stabilizer	50% Glycerol
Storage instruction	For continuous use, store undiluted antibody at 2-8°C for up to a week. For long-term storage, aliquot and store at -20°C. Storage in frost free freezers is not recommended. Avoid repeated freeze/thaw cycles. Suggest spin the vial prior to opening. The antibody solution should be gently mixed before use.
Note	For laboratory research only, not for drug, diagnostic or other use.

Bioinformation

Gene Symbol	GOLGA5
Gene Full Name	golgin A5
Background	The Golgi apparatus, which participates in glycosylation and transport of proteins and lipids in the secretory pathway, consists of a series of stacked cisternae (flattened membrane sacs). Interactions between the Golgi and microtubules are thought to be important for the reorganization of the Golgi after it fragments during mitosis. This gene encodes one of the golgins, a family of proteins localized to the Golgi. This protein is a coiled-coil membrane protein that has been postulated to play a role in vesicle tethering and docking. Translocations involving this gene and the ret proto-oncogene have been found in tumor tissues; the chimeric sequences have been designated RET-II and PTC5. A pseudogene of this gene is located on the short arm of chromosome 5. [provided by RefSeq, Jul 2013]
Function	Involved in maintaining Golgi structure. Stimulates the formation of Golgi stacks and ribbons. Involved in intra-Golgi retrograde transport. [UniProt]
Calculated Mw	83 kDa
PTM	Highly phosphorylated during mitosis. Phosphorylation is barely detectable during interphase. [UniProt]
Cellular Localization	Golgi apparatus membrane; Single-pass type IV membrane protein. Note=Found throughout the Golgi, both on cisternae and, at higher abundance, on the tubulo-vesicular structures of the cis-Golgi network. [UniProt]

Images



HeLa

ARG59165 anti-GOLGA5 antibody WB image

Western blot: 25 µg of HeLa cell lysate stained with ARG59165 anti-GOLGA5 antibody at 1:1000 dilution.