

**ARG59148**  
anti-MEGF6 antibodyPackage: 50 µl  
Store at: -20°C

### Summary

Product Description	Rabbit Polyclonal antibody recognizes MEGF6
Tested Reactivity	Rat
Tested Application	WB
Host	Rabbit
Clonality	Polyclonal
Isotype	IgG
Target Name	MEGF6
Species	Rat
Immunogen	Synthetic peptide around the middle region of Rat MEGF6. (within the following region: RRGCTSLEESVVDLDGRLPFVRPLPHIAVLRDELPRLFQDDYGAEEEEAAA)
Conjugation	Un-conjugated
Alternate Names	Multiple EGF-like domains protein 6; EGF-like protein 3; EGFL3; Epidermal growth factor-like protein 3; Multiple epidermal growth factor-like domains protein 6

### Application Instructions

Application table	Application	Dilution
	WB	1 - 3 µg/ml
Application Note	* The dilutions indicate recommended starting dilutions and the optimal dilutions or concentrations should be determined by the scientist.	
Positive Control	Rat lung	

### Properties

Form	Liquid
Purification	Affinity purified.
Buffer	PBS, 0.09% (w/v) Sodium azide and 2% Sucrose.
Preservative	0.09% (w/v) Sodium azide
Stabilizer	2% Sucrose
Concentration	Batch dependent: 0.5 - 1 mg/ml
Storage instruction	For continuous use, store undiluted antibody at 2-8°C for up to a week. For long-term storage, aliquot and store at -20°C or below. Storage in frost free freezers is not recommended. Avoid repeated freeze/thaw cycles. Suggest spin the vial prior to opening. The antibody solution should be gently mixed before use.
Note	For laboratory research only, not for drug, diagnostic or other use.

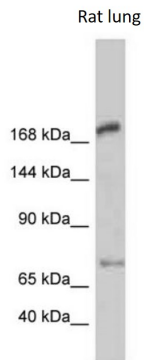
## Bioinformation

---

Gene Symbol	MEGF6
Gene Full Name	multiple EGF-like-domains 6
Calculated Mw	165 kDa (Rat)
Cellular Localization	Secreted. [UniProt]

## Images

---



ARG59148 anti-MEGF6 antibody WB image

Western blot: Rat lung lysate stained with ARG59148 anti-MEGF6 antibody at 1 µg/ml dilution.