

## ARG59141 anti-RRM2 antibody

Package: 100 µl  
Store at: -20°C

### Summary

Product Description	Rabbit Polyclonal antibody recognizes RRM2
Tested Reactivity	Hu
Tested Application	ICC/IF, IP, WB
Host	Rabbit
Clonality	Polyclonal
Isotype	IgG
Target Name	RRM2
Species	Human
Immunogen	Synthetic peptide derived from Human RRM2.
Conjugation	Un-conjugated
Alternate Names	R2; EC 1.17.4.1; Ribonucleoside-diphosphate reductase subunit M2; Ribonucleotide reductase small chain; Ribonucleotide reductase small subunit; RR2M; RR2

### Application Instructions

Application table	Application	Dilution
	ICC/IF	1:50 - 1:200
	IP	1:50
	WB	1:500 - 1:2000
Application Note	* The dilutions indicate recommended starting dilutions and the optimal dilutions or concentrations should be determined by the scientist.	
Observed Size	~ 45 kDa	

### Properties

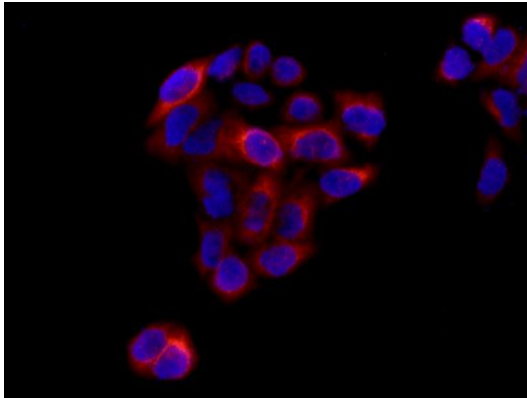
Form	Liquid
Purification	Affinity purified.
Buffer	PBS (pH 7.4), 150mM NaCl, 0.02% Sodium azide and 50% Glycerol.
Preservative	0.02% Sodium azide
Stabilizer	50% Glycerol
Storage instruction	For continuous use, store undiluted antibody at 2-8°C for up to a week. For long-term storage, aliquot and store at -20°C. Storage in frost free freezers is not recommended. Avoid repeated freeze/thaw cycles. Suggest spin the vial prior to opening. The antibody solution should be gently mixed before use.
Note	For laboratory research only, not for drug, diagnostic or other use.

## Bioinformation

---

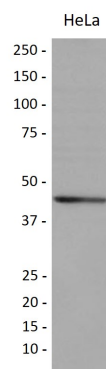
Gene Symbol	RRM2
Gene Full Name	ribonucleotide reductase M2
Background	This gene encodes one of two non-identical subunits for ribonucleotide reductase. This reductase catalyzes the formation of deoxyribonucleotides from ribonucleotides. Synthesis of the encoded protein (M2) is regulated in a cell-cycle dependent fashion. Transcription from this gene can initiate from alternative promoters, which results in two isoforms that differ in the lengths of their N-termini. Related pseudogenes have been identified on chromosomes 1 and X. [provided by RefSeq, Sep 2009]
Function	Provides the precursors necessary for DNA synthesis. Catalyzes the biosynthesis of deoxyribonucleotides from the corresponding ribonucleotides. Inhibits Wnt signaling. [UniProt]
Calculated Mw	45 kDa
PTM	Phosphorylation on Ser-20 relieves the inhibitory effect on Wnt signaling. [UniProt]
Cellular Localization	Cytoplasm. [UniProt]

## Images



ARG59141 anti-RRM2 antibody ICC/IF image

Immunofluorescence: HeLa cells stained with ARG59141 anti-RRM2 antibody at 1:100 dilution (red). DAPI nuclear staining (blue)



ARG59141 anti-RRM2 antibody WB image

Western blot: HeLa cell lysate stained with ARG59141 anti-RRM2 antibody.