

ARG59130 anti-SP2 antibody

Package: 50 µg
Store at: -20°C

Summary

Product Description	Rabbit Polyclonal antibody recognizes SP2
Tested Reactivity	Hu, Rat
Predict Reactivity	Hm
Tested Application	WB
Host	Rabbit
Clonality	Polyclonal
Isotype	IgG
Target Name	SP2
Species	Human
Immunogen	Synthetic peptide corresponding to aa. 312-343 of Human SP2. (QVVQIPQQALRVVQAASATLPTVPQKPSQNFQ)
Conjugation	Un-conjugated
Alternate Names	Transcription factor Sp2

Application Instructions

Application table	Application	Dilution
	WB	0.1 - 0.5 µg/ml

Application Note * The dilutions indicate recommended starting dilutions and the optimal dilutions or concentrations should be determined by the scientist.

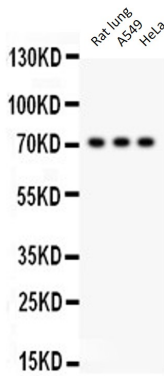
Properties

Form	Liquid
Purification	Affinity purification with immunogen.
Buffer	0.9% NaCl, 0.2% Na ₂ HPO ₄ , 0.05% Sodium azide and 5% BSA.
Preservative	0.05% Sodium azide
Stabilizer	5% BSA
Concentration	0.5 mg/ml
Storage instruction	For continuous use, store undiluted antibody at 2-8°C for up to a week. For long-term storage, aliquot and store at -20°C or below. Storage in frost free freezers is not recommended. Avoid repeated freeze/thaw cycles. Suggest spin the vial prior to opening. The antibody solution should be gently mixed before use.
Note	For laboratory research only, not for drug, diagnostic or other use.

Bioinformation

Gene Symbol	SP2
Gene Full Name	Sp2 transcription factor
Background	This gene encodes a member of the Sp subfamily of Sp/XKLF transcription factors. Sp family proteins are sequence-specific DNA-binding proteins characterized by an amino-terminal trans-activation domain and three carboxy-terminal zinc finger motifs. This protein contains the least conserved DNA-binding domain within the Sp subfamily of proteins, and its DNA sequence specificity differs from the other Sp proteins. It localizes primarily within subnuclear foci associated with the nuclear matrix, and can activate or in some cases repress expression from different promoters. [provided by RefSeq, Jul 2008]
Function	Binds to GC box promoters elements and selectively activates mRNA synthesis from genes that contain functional recognition sites. [UniProt]
Calculated Mw	65 kDa
Cellular Localization	Nucleus. [UniProt]

Images



ARG59130 anti-SP2 antibody WB image

Western blot: 50 μ g of Rat lung, 40 μ g of A549 and 40 μ g of HeLa lysates stained with ARG59130 anti-SP2 antibody at 0.5 μ g/ml dilution.