

## ARG59094 anti-GLUT2 antibody

Package: 100 µl  
Store at: -20°C

### Summary

Product Description	Rabbit Polyclonal antibody recognizes GLUT2
Tested Reactivity	Hu, Ms, Rat
Tested Application	ICC/IF, IHC-P, WB
Host	Rabbit
Clonality	Polyclonal
Isotype	IgG
Target Name	GLUT2
Species	Human
Immunogen	Synthetic peptide within aa. 1-100 of Human GLUT2 (NP_000331.1).
Conjugation	Un-conjugated
Alternate Names	Solute carrier family 2, facilitated glucose transporter member 2; GLUT-2; GLUT2; Glucose transporter type 2, liver

### Application Instructions

Application table	Application	Dilution
	ICC/IF	1:50 - 1:200
	IHC-P	1:50 - 1:200
	WB	1:500 - 1:2000
Application Note	* The dilutions indicate recommended starting dilutions and the optimal dilutions or concentrations should be determined by the scientist.	
Positive Control	SW480	
Observed Size	57kDa	

### Properties

Form	Liquid
Purification	Affinity purified.
Buffer	PBS (pH 7.3), 0.02% Sodium azide and 50% Glycerol.
Preservative	0.02% Sodium azide
Stabilizer	50% Glycerol
Storage instruction	For continuous use, store undiluted antibody at 2-8°C for up to a week. For long-term storage, aliquot and store at -20°C. Storage in frost free freezers is not recommended. Avoid repeated freeze/thaw cycles. Suggest spin the vial prior to opening. The antibody solution should be gently mixed before use.

Note

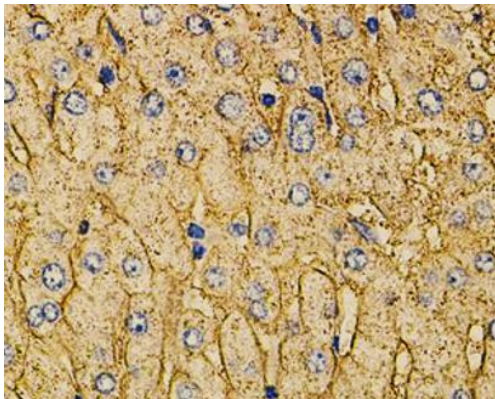
For laboratory research only, not for drug, diagnostic or other use.

## Bioinformation

---

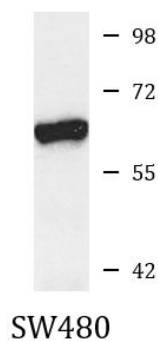
Gene Symbol	SLC2A2
Gene Full Name	solute carrier family 2 (facilitated glucose transporter), member 2
Background	This gene encodes an integral plasma membrane glycoprotein of the liver, islet beta cells, intestine, and kidney epithelium. The encoded protein mediates facilitated bidirectional glucose transport. Because of its low affinity for glucose, it has been suggested as a glucose sensor. Mutations in this gene are associated with susceptibility to diseases, including Fanconi-Bickel syndrome and noninsulin-dependent diabetes mellitus (NIDDM). Alternative splicing results in multiple transcript variants of this gene. [provided by RefSeq, Jul 2013]
Function	Facilitative glucose transporter. This isoform likely mediates the bidirectional transfer of glucose across the plasma membrane of hepatocytes and is responsible for uptake of glucose by the beta cells; may comprise part of the glucose-sensing mechanism of the beta cell. May also participate with the Na(+)/glucose cotransporter in the transcellular transport of glucose in the small intestine and kidney. [UniProt]
Calculated Mw	57 kDa
PTM	N-glycosylated; required for stability and retention at the cell surface of pancreatic beta cells. [UniProt]
Cellular Localization	Membrane; Multi-pass membrane protein. [UniProt]

## Images



ARG59094 anti-GLUT2 antibody IHC-P image

Immunohistochemistry: Paraffin-embedded Human liver injury stained with ARG59094 anti-GLUT2 antibody at 1:100 dilution.



ARG59094 anti-GLUT2 antibody WB image

Western blot: 25 µg of SW480 cell lysate stained with ARG59094 anti-GLUT2 antibody at 1:1000 dilution.