

## ARG59071 anti-ATG14 / ATG14L antibody

Package: 50 µg  
Store at: -20°C

### Summary

Product Description	Rabbit Polyclonal antibody recognizes ATG14 / ATG14L
Tested Reactivity	Hu, Rat
Predict Reactivity	Hm
Tested Application	FACS, ICC/IF, IHC-P, WB
Host	Rabbit
Clonality	Polyclonal
Isotype	IgG
Target Name	ATG14 / ATG14L
Species	Human
Immunogen	Synthetic peptide corresponding to aa. 70-101 of Human ATG14 / ATG14L (RDRERFIDKKERLSRLKSKQEEFQKEVLKAME).
Conjugation	Un-conjugated
Alternate Names	BARKOR; Autophagy-related protein 14-like protein; Beclin 1-associated autophagy-related key regulator; Barkor; KIAA0831; Atg14L; ATG14L

### Application Instructions

Application table	Application	Dilution
	FACS	1 - 3 µg/10 <sup>6</sup> cells
	ICC/IF	5 µg/ml
	IHC-P	0.5 - 1 µg/ml
	WB	0.1 - 0.5 µg/ml
Application Note	IHC-P: Antigen Retrieval: Heat mediated was performed in Citrate buffer (pH 6.0) for 20 min. * The dilutions indicate recommended starting dilutions and the optimal dilutions or concentrations should be determined by the scientist.	
Observed Size	~ 57 kDa	

### Properties

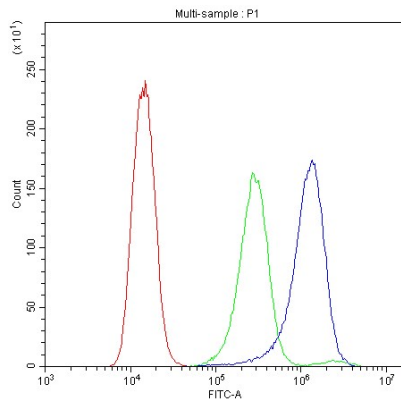
Form	Liquid
Purification	Affinity purification with immunogen.
Buffer	0.2% Na <sub>2</sub> HPO <sub>4</sub> , 0.9% NaCl, 0.05% Sodium azide and 5% BSA.
Preservative	0.05% Sodium azide
Stabilizer	5% BSA

Concentration	0.5 mg/ml
Storage instruction	For continuous use, store undiluted antibody at 2-8°C for up to a week. For long-term storage, aliquot and store at -20°C or below. Storage in frost free freezers is not recommended. Avoid repeated freeze/thaw cycles. Suggest spin the vial prior to opening. The antibody solution should be gently mixed before use.
Note	For laboratory research only, not for drug, diagnostic or other use.

## Bioinformation

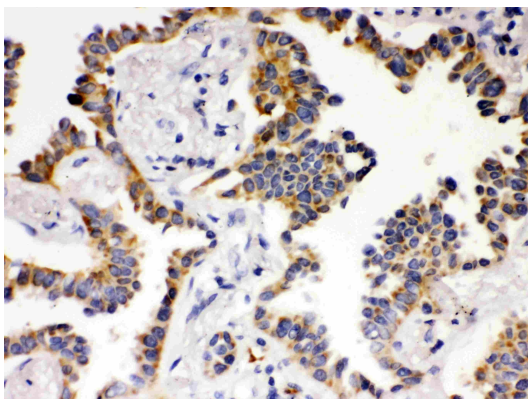
Gene Symbol	ATG14
Gene Full Name	autophagy related 14
Function	Required for both basal and inducible autophagy. Determines the localization of the autophagy-specific PI3-kinase complex PI3KC3-C1. Plays a role in autophagosome formation and MAP1LC3/LC3 conjugation to phosphatidylethanolamine. Promotes BECN1 translocation from the trans-Golgi network to autophagosomes. Enhances PIK3C3 activity in a BECN1-dependent manner. Essential for the autophagy-dependent phosphorylation of BECN1. Stimulates the phosphorylation of BECN1, but suppresses the phosphorylation PIK3C3 by AMPK. Binds to STX17-SNAP29 binary t-SNARE complex on autophagosomes and primes it for VAMP8 interaction to promote autophagosome-endolysosome fusion. Modulates the hepatic lipid metabolism (By similarity). [UniProt]
Calculated Mw	55 kDa
Cellular Localization	Cytoplasm. Endoplasmic reticulum membrane; Peripheral membrane protein. Preautophagosomal structure membrane; Peripheral membrane protein. Cytoplasmic vesicle, autophagosome membrane; Peripheral membrane protein. [UniProt]

## Images



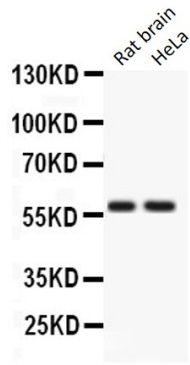
### ARG59071 anti-ATG14 / ATG14L antibody FACS image

Flow Cytometry: A431 cells were blocked with 10% normal goat serum and then stained with ARG59071 anti-ATG14 / ATG14L antibody (blue) at 1 µg/10<sup>6</sup> cells for 30 min at 20°C, followed by DyLight®488 labelled secondary antibody. Isotype control antibody (green) was rabbit IgG (1 µg/10<sup>6</sup> cells) used under the same conditions. Unlabelled sample (red) was also used as a control.



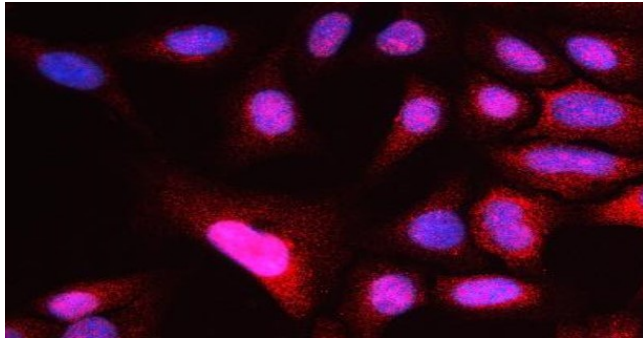
### ARG59071 anti-ATG14 / ATG14L antibody IHC-P image

Immunohistochemistry: Paraffin-embedded Human lung cancer tissue. Antigen Retrieval: Heat mediated was performed in Citrate buffer (pH 6.0, epitope retrieval solution) for 20 min. The tissue section was blocked with 10% goat serum. The tissue section was then stained with ARG59071 anti-ATG14 / ATG14L antibody at 1 µg/ml, overnight at 4°C.



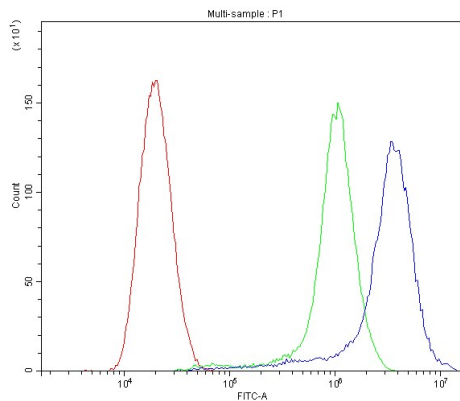
#### ARG59071 anti-ATG14 / ATG14L antibody WB image

Western blot: 50 µg of samples under reducing conditions. Rat brain and HeLa whole cell lysates stained with ARG59071 anti-ATG14 / ATG14L antibody at 0.5 µg/ml, overnight at 4°C.



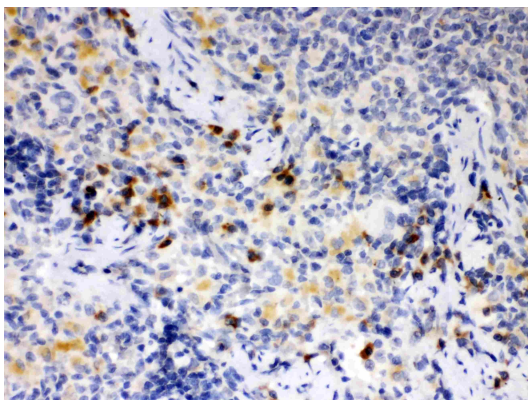
#### ARG59071 anti-ATG14 / ATG14L antibody ICC/IF image

Immunofluorescence: U2OS cells stained with ARG59071 anti-ATG14 / ATG14L antibody at 5 µg/mL.



#### ARG59071 anti-ATG14 / ATG14L antibody FACS image

Flow Cytometry: SiHa cells were blocked with 10% normal goat serum and then stained with ARG59071 anti-ATG14 / ATG14L antibody (blue) at 1 µg/10<sup>6</sup> cells for 30 min at 20°C, followed by DyLight<sup>®</sup>488 labelled secondary antibody. Isotype control antibody (green) was Rabbit IgG (1 µg/10<sup>6</sup> cells) used under the same conditions. Unlabelled sample (red) was also used as a control.



#### ARG59071 anti-ATG14 / ATG14L antibody IHC-P image

Immunohistochemistry: Paraffin-embedded Rat spleen tissue. Antigen Retrieval: Heat mediated was performed in Citrate buffer (pH 6.0, epitope retrieval solution) for 20 min. The tissue section was blocked with 10% goat serum. The tissue section was then stained with ARG59071 anti-ATG14 / ATG14L antibody at 1 µg/ml, overnight at 4°C.