

ARG59013 anti-SLC26A4 antibody

Package: 50 µg
Store at: -20°C

Summary

Product Description	Rabbit Polyclonal antibody recognizes SLC26A4
Tested Reactivity	Hu
Predict Reactivity	Ms, Rat
Tested Application	WB
Host	Rabbit
Clonality	Polyclonal
Isotype	IgG
Target Name	SLC26A4
Species	Human
Immunogen	Synthetic peptide corresponding to a sequence of Human SLC26A4 (RSLRVIVKEFQRIDVNVVFASLQDYVIEKLEQ).
Conjugation	Un-conjugated
Alternate Names	DFNB4; EVA; PDS; Pendrin; Solute carrier family 26 member 4; TDH2B; Sodium-independent chloride/iodide transporter

Application Instructions

Application table	Application	Dilution
	WB	0.1 - 0.5 µg/ml
Application Note	* The dilutions indicate recommended starting dilutions and the optimal dilutions or concentrations should be determined by the scientist.	

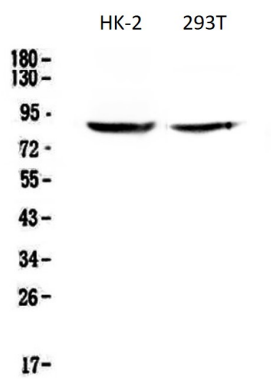
Properties

Form	Liquid
Purification	Affinity purification with immunogen.
Buffer	0.2% Na ₂ HPO ₄ , 0.9% NaCl, 0.05% Sodium azide and 4% Trehalose.
Preservative	0.05% Sodium azide
Stabilizer	4% Trehalose
Concentration	0.5 mg/ml
Storage instruction	For continuous use, store undiluted antibody at 2-8°C for up to a week. For long-term storage, aliquot and store at -20°C or below. Storage in frost free freezers is not recommended. Avoid repeated freeze/thaw cycles. Suggest spin the vial prior to opening. The antibody solution should be gently mixed before use.
Note	For laboratory research only, not for drug, diagnostic or other use.

Bioinformation

Gene Symbol	SLC26A4
Gene Full Name	solute carrier family 26 (anion exchanger), member 4
Background	Mutations in this gene are associated with Pendred syndrome, the most common form of syndromic deafness, an autosomal-recessive disease. It is highly homologous to the SLC26A3 gene; they have similar genomic structures and this gene is located 3' of the SLC26A3 gene. The encoded protein has homology to sulfate transporters. [provided by RefSeq, Jul 2008]
Function	Sodium-independent transporter of chloride and iodide. [UniProt]
Calculated Mw	86 kDa
Cellular Localization	Membrane; Localizes to the apical brush border of cells in the cortical collecting ducts of the kidney. [UniProt]

Images



ARG59013 anti-SLC26A4 antibody WB image

Western blot: 50 µg of samples under reducing conditions. HK-2 and 293T cell lysates stained with ARG59013 anti-SLC26A4 antibody at 0.5 µg/ml, overnight at 4°C.