

ARG59007 anti-Methylmalonyl-CoA mutase antibody

Package: 100 µl
Store at: -20°C

Summary

Product Description	Rabbit Polyclonal antibody recognizes Methylmalonyl-CoA mutase
Tested Reactivity	Hu, Ms
Tested Application	ICC/IF, WB
Host	Rabbit
Clonality	Polyclonal
Isotype	IgG
Target Name	Methylmalonyl-CoA mutase
Species	Human
Immunogen	KLH-conjugated synthetic peptide corresponding to aa. 492-526 of Human Methylmalonyl-CoA mutase.
Conjugation	Un-conjugated
Alternate Names	Methylmalonyl-CoA isomerase; MCM; EC 5.4.99.2; Methylmalonyl-CoA mutase, mitochondrial

Application Instructions

Application table	Application	Dilution
	ICC/IF	1:25
	WB	1:2000
Application Note	* The dilutions indicate recommended starting dilutions and the optimal dilutions or concentrations should be determined by the scientist.	
Positive Control	K562	

Properties

Form	Liquid
Purification	Purification with Protein A and immunogen peptide.
Buffer	PBS and 0.09% (W/V) Sodium azide.
Preservative	0.09% (W/V) Sodium azide
Storage instruction	For continuous use, store undiluted antibody at 2-8°C for up to a week. For long-term storage, aliquot and store at -20°C or below. Storage in frost free freezers is not recommended. Avoid repeated freeze/thaw cycles. Suggest spin the vial prior to opening. The antibody solution should be gently mixed before use.
Note	For laboratory research only, not for drug, diagnostic or other use.

Bioinformation

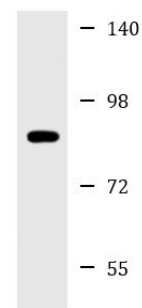
Gene Symbol	MUT
Gene Full Name	methylmalonyl CoA mutase
Background	This gene encodes the mitochondrial enzyme methylmalonyl Coenzyme A mutase. In humans, the product of this gene is a vitamin B12-dependent enzyme which catalyzes the isomerization of methylmalonyl-CoA to succinyl-CoA, while in other species this enzyme may have different functions. Mutations in this gene may lead to various types of methylmalonic aciduria. [provided by RefSeq, Jul 2008]
Function	Involved in the degradation of several amino acids, odd-chain fatty acids and cholesterol via propionyl-CoA to the tricarboxylic acid cycle. MCM has different functions in other species. [UniProt]
Calculated Mw	83 kDa
Cellular Localization	Mitochondrion matrix. [UniProt]

Images



ARG59007 anti-Methylmalonyl-CoA mutase antibody ICC/IF image

Immunofluorescence: 4% paraformaldehyde-fixed, 0.1% Triton X-100 permeabilized HeLa cells stained with ARG59007 anti-Methylmalonyl-CoA mutase antibody (green) at 1:25 dilution. Nuclear counter stain is DAPI (blue).



K562

ARG59007 anti-Methylmalonyl-CoA mutase antibody WB image

Western blot: 20 µg of K562 cell lysate stained with ARG59007 anti-Methylmalonyl-CoA mutase antibody at 1:2000 dilution.