

**ARG58990**  
**anti-CHRAC1 antibody**Package: 50 µl  
Store at: -20°C

### Summary

Product Description	Rabbit Polyclonal antibody recognizes CHRAC1
Tested Reactivity	Hu, Ms, Rat
Tested Application	WB
Host	Rabbit
Clonality	Polyclonal
Isotype	IgG
Target Name	CHRAC1
Species	Human
Immunogen	Recombinant fusion protein corresponding to aa. 1-131 of Human CHRAC1 (NP_059140.1).
Conjugation	Un-conjugated
Alternate Names	CHRAC-1; Chromatin accessibility complex protein 1; CHRAC-15; YCL1; CHARC1; DNA polymerase epsilon subunit p15; CHARC15; HuCHRAC15; CHRAC15; Chromatin accessibility complex 15 kDa protein

### Application Instructions

Application table	Application	Dilution
	WB	1:500 - 1:2000
Application Note	* The dilutions indicate recommended starting dilutions and the optimal dilutions or concentrations should be determined by the scientist.	
Positive Control	HeLa	
Observed Size	~ 16 kDa	

### Properties

Form	Liquid
Purification	Affinity purified.
Buffer	PBS (pH 7.3), 0.02% Sodium azide and 50% Glycerol.
Preservative	0.02% Sodium azide
Stabilizer	50% Glycerol
Storage instruction	For continuous use, store undiluted antibody at 2-8°C for up to a week. For long-term storage, aliquot and store at -20°C. Storage in frost free freezers is not recommended. Avoid repeated freeze/thaw cycles. Suggest spin the vial prior to opening. The antibody solution should be gently mixed before use.
Note	For laboratory research only, not for drug, diagnostic or other use.

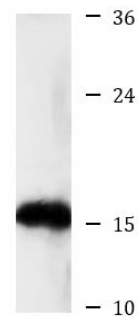
## Bioinformation

---

Gene Symbol	CHRAC1
Gene Full Name	chromatin accessibility complex 1
Background	CHRAC1 is a histone-fold protein that interacts with other histone-fold proteins to bind DNA in a sequence-independent manner. These histone-fold protein dimers combine within larger enzymatic complexes for DNA transcription, replication, and packaging.[supplied by OMIM, Apr 2004]
Function	Forms a complex with DNA polymerase epsilon subunit POLE3 and binds naked DNA, which is then incorporated into chromatin, aided by the nucleosome remodeling activity of ISWI/SNF2H and ACF1. [UniProt]
Calculated Mw	15 kDa
Cellular Localization	Nucleus. [UniProt]

## Images

---



ARG58990 anti-CHRAC1 antibody WB image

Western blot: 25 µg of HeLa cell lysate stained with ARG58990 anti-CHRAC1 antibody at 1:1000 dilution.