

## ARG58957 anti-Methylmalonyl-CoA mutase antibody

Package: 100 µl  
Store at: -20°C

### Summary

Product Description	Rabbit Polyclonal antibody recognizes Methylmalonyl-CoA mutase
Tested Reactivity	Hu, Ms, Rat
Tested Application	ICC/IF, WB
Host	Rabbit
Clonality	Polyclonal
Isotype	IgG
Target Name	Methylmalonyl-CoA mutase
Species	Human
Immunogen	Recombinant fusion protein corresponding to aa. 451-750 of Human Methylmalonyl-CoA mutase (NP_000246.2).
Conjugation	Un-conjugated
Alternate Names	Methylmalonyl-CoA isomerase; MCM; EC 5.4.99.2; Methylmalonyl-CoA mutase, mitochondrial

### Application Instructions

Application table	Application	Dilution
	ICC/IF	1:50 - 1:200
	WB	1:1000 - 1:2000
Application Note	* The dilutions indicate recommended starting dilutions and the optimal dilutions or concentrations should be determined by the scientist.	
Positive Control	Mouse pancreas	
Observed Size	83 kDa	

### Properties

Form	Liquid
Purification	Affinity purified.
Buffer	PBS (pH 7.3), 0.02% Sodium azide and 50% Glycerol.
Preservative	0.02% Sodium azide
Stabilizer	50% Glycerol
Storage instruction	For continuous use, store undiluted antibody at 2-8°C for up to a week. For long-term storage, aliquot and store at -20°C. Storage in frost free freezers is not recommended. Avoid repeated freeze/thaw cycles. Suggest spin the vial prior to opening. The antibody solution should be gently mixed before use.
Note	For laboratory research only, not for drug, diagnostic or other use.

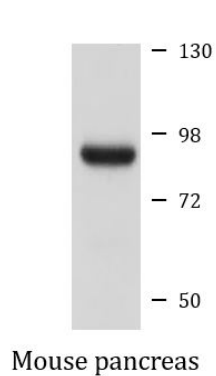
## Bioinformation

---

Gene Symbol	MUT
Gene Full Name	methylmalonyl CoA mutase
Background	This gene encodes the mitochondrial enzyme methylmalonyl Coenzyme A mutase. In humans, the product of this gene is a vitamin B12-dependent enzyme which catalyzes the isomerization of methylmalonyl-CoA to succinyl-CoA, while in other species this enzyme may have different functions. Mutations in this gene may lead to various types of methylmalonic aciduria. [provided by RefSeq, Jul 2008]
Function	Involved in the degradation of several amino acids, odd-chain fatty acids and cholesterol via propionyl-CoA to the tricarboxylic acid cycle. MCM has different functions in other species. [UniProt]
Calculated Mw	83 kDa
Cellular Localization	Mitochondrion matrix. [UniProt]

## Images

---



ARG58957 anti-Methylmalonyl-CoA mutase antibody WB image

Western blot: 25 µg of Mouse pancreas lysate stained with ARG58957 anti-Methylmalonyl-CoA mutase antibody at 1:1000 dilution.