

ARG58937 anti-GPR6 antibody

Package: 50 µl
Store at: -20°C

Summary

Product Description	Rabbit Polyclonal antibody recognizes GPR6
Tested Reactivity	Hu
Predict Reactivity	Ms, Rat, Cow
Tested Application	IHC-P, WB
Host	Rabbit
Clonality	Polyclonal
Isotype	IgG
Target Name	GPR6
Species	Human
Immunogen	Synthetic peptide around the N-terminal region of Human GPR6. (within the following region: NASAASLND SQVVVVA AEGAAAAATAAGGPDTGEWGPPAAAAALGAGGGAN)
Conjugation	Un-conjugated
Alternate Names	G-protein coupled receptor 6; Sphingosine 1-phosphate receptor GPR6

Application Instructions

Predict Reactivity Note	Predicted Homology Based On Immunogen Sequence: Cow: 86%; Mouse: 93%; Rat: 93%						
Application table	<table><thead><tr><th>Application</th><th>Dilution</th></tr></thead><tbody><tr><td>IHC-P</td><td>5 µg/ml</td></tr><tr><td>WB</td><td>0.2 - 1 µg/ml</td></tr></tbody></table>	Application	Dilution	IHC-P	5 µg/ml	WB	0.2 - 1 µg/ml
Application	Dilution						
IHC-P	5 µg/ml						
WB	0.2 - 1 µg/ml						
Application Note	* The dilutions indicate recommended starting dilutions and the optimal dilutions or concentrations should be determined by the scientist.						
Positive Control	Human placenta						

Properties

Form	Liquid
Purification	Affinity purified.
Buffer	PBS, 0.09% (w/v) Sodium azide and 2% Sucrose.
Preservative	0.09% (w/v) Sodium azide
Stabilizer	2% Sucrose
Concentration	Batch dependent: 0.5 - 1 mg/ml
Storage instruction	For continuous use, store undiluted antibody at 2-8°C for up to a week. For long-term storage, aliquot and store at -20°C or below. Storage in frost free freezers is not recommended. Avoid repeated

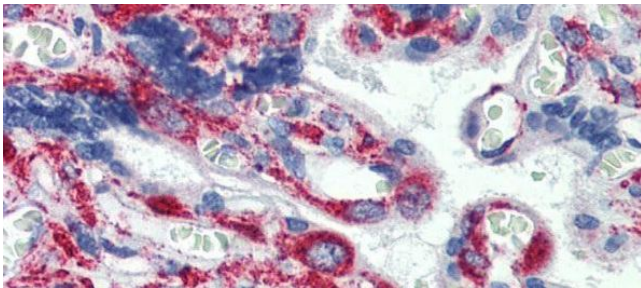
freeze/thaw cycles. Suggest spin the vial prior to opening. The antibody solution should be gently mixed before use.

Note For laboratory research only, not for drug, diagnostic or other use.

Bioinformation

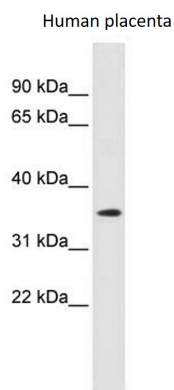
Gene Symbol	GPR6
Gene Full Name	G protein-coupled receptor 6
Function	Orphan receptor with constitutive G(s) signaling activity that activate cyclic AMP. Promotes neurite outgrowth and blocks myelin inhibition in neurons (By similarity). [UniProt]
Calculated Mw	38 kDa
Cellular Localization	Cell membrane; Multi-pass membrane protein. Note=Detected in the intracellular compartments. It is currently unclear whether this is a cell surface or intracellular receptor. [UniProt]

Images



ARG58937 anti-GPR6 antibody IHC-P image

Immunohistochemistry: Paraffin-embedded Human placenta stained with ARG58937 anti-GPR6 antibody at 5 µg/ml dilution.



ARG58937 anti-GPR6 antibody WB image

Western blot: Human placenta lysate stained with ARG58937 anti-GPR6 antibody at 0.2 - 1 µg/ml dilution.