

**ARG58932**  
anti-PLA2G4D antibodyPackage: 100 µl  
Store at: -20°C

### Summary

Product Description	Rabbit Polyclonal antibody recognizes PLA2G4D
Tested Reactivity	Hu
Tested Application	WB
Host	Rabbit
Clonality	Polyclonal
Isotype	IgG
Target Name	PLA2G4D
Species	Human
Immunogen	KLH-conjugated synthetic peptide corresponding to aa. 754-786 of Human PLA2G4D.
Conjugation	Un-conjugated
Alternate Names	cPLA2-delta; Cytosolic phospholipase A2 delta; EC 3.1.1.4; Phospholipase A2 group IVD; cPLA2delta

### Application Instructions

Application table	Application	Dilution
	WB	1:2000
Application Note	* The dilutions indicate recommended starting dilutions and the optimal dilutions or concentrations should be determined by the scientist.	
Positive Control	A431	

### Properties

Form	Liquid
Purification	Purification with Protein A and immunogen peptide.
Buffer	PBS and 0.09% (W/V) Sodium azide.
Preservative	0.09% (W/V) Sodium azide
Storage instruction	For continuous use, store undiluted antibody at 2-8°C for up to a week. For long-term storage, aliquot and store at -20°C or below. Storage in frost free freezers is not recommended. Avoid repeated freeze/thaw cycles. Suggest spin the vial prior to opening. The antibody solution should be gently mixed before use.
Note	For laboratory research only, not for drug, diagnostic or other use.

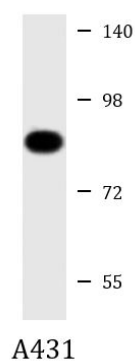
### Bioinformation

Gene Symbol	PLA2G4D
-------------	---------

Gene Full Name	phospholipase A2, group IVD (cytosolic)
Background	The phospholipase A2 enzyme family, including PLA2G4D, catalyze the hydrolysis of glycerophospholipids at the sn-2 position and then liberate free fatty acids and lysophospholipids (Chiba et al., 2004 [PubMed 14709560]).[supplied by OMIM, Jun 2009]
Function	Calcium-dependent phospholipase A2 that selectively hydrolyzes glycerophospholipids in the sn-2 position. Not arachidonic acid-specific but has linoleic acid-specific activity. May play a role in inflammation in psoriatic lesions. [UniProt]
Calculated Mw	92 kDa
Cellular Localization	Cytoplasm, cytosol. Membrane; Peripheral membrane protein; Cytoplasmic side. Note=Translocates to perinuclear membranes that may correspond to endoplasmic reticulum or Golgi in a calcium-dependent fashion. [UniProt]

## Images

---



ARG58932 anti-PLA2G4D antibody WB image

Western blot: 20 µg of A431 cell lysate stained with ARG58932 anti-PLA2G4D antibody at 1:2000 dilution.