

ARG58912 anti-ALT / Alanine Transaminase antibody

Package: 50 µg
Store at: -20°C

Summary

Product Description	Goat Polyclonal antibody recognizes ALT / Alanine Transaminase
Tested Reactivity	Hu
Tested Application	WB
Host	Goat
Clonality	Polyclonal
Isotype	IgG
Target Name	ALT / Alanine Transaminase
Species	Human
Immunogen	Synthetic peptide from the internal region of Human ALT / Alanine Transaminase. (NP_005300.1) (KLTEQVFNEAPGISC)
Conjugation	Un-conjugated
Alternate Names	Glutamate pyruvate transaminase 1; AAT1; GPT1; GPT 1; Glutamic--alanine transaminase 1; Glutamic--pyruvic transaminase 1; Alanine aminotransferase 1; ALT1; EC 2.6.1.2

Application Instructions

Application table	Application	Dilution
	WB	0.1 - 0.3 µg/ml
Application Note	WB: Recommend incubate at RT for 1h. * The dilutions indicate recommended starting dilutions and the optimal dilutions or concentrations should be determined by the scientist.	
Observed Size	~ 52 kDa	

Properties

Form	Liquid
Purification	Ammonium sulphate precipitation followed by affinity purification with immunogen.
Buffer	Tris saline (pH 7.3), 0.02% Sodium azide and 0.5% BSA.
Preservative	0.02% Sodium azide
Stabilizer	0.5% BSA
Concentration	0.5 mg/ml
Storage instruction	For continuous use, store undiluted antibody at 2-8°C for up to a week. For long-term storage, aliquot and store at -20°C or below. Storage in frost free freezers is not recommended. Avoid repeated freeze/thaw cycles. Suggest spin the vial prior to opening. The antibody solution should be gently mixed before use.

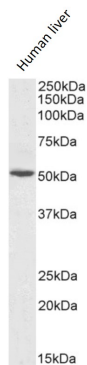
Note

For laboratory research only, not for drug, diagnostic or other use.

Bioinformation

Gene Symbol	GPT
Gene Full Name	glutamic-pyruvate transaminase (alanine aminotransferase)
Background	This gene encodes cytosolic alanine aminotransaminase 1 (ALT1); also known as glutamate-pyruvate transaminase 1. This enzyme catalyzes the reversible transamination between alanine and 2-oxoglutarate to generate pyruvate and glutamate and, therefore, plays a key role in the intermediary metabolism of glucose and amino acids. Serum activity levels of this enzyme are routinely used as a biomarker of liver injury caused by drug toxicity, infection, alcohol, and steatosis. A related gene on chromosome 16 encodes a putative mitochondrial alanine aminotransaminase.[provided by RefSeq, Nov 2009]
Function	Catalyzes the reversible transamination between alanine and 2-oxoglutarate to form pyruvate and glutamate. Participates in cellular nitrogen metabolism and also in liver gluconeogenesis starting with precursors transported from skeletal muscles (By similarity). [UniProt]
Calculated Mw	55 kDa
Cellular Localization	Cytoplasm. [UniProt]

Images



ARG58912 anti-ALT / Alanine Transaminase antibody WB image

Western blot: 35 µg of Human liver lysate (in RIPA buffer) stained with ARG58912 anti-ALT / Alanine Transaminase antibody at 0.1 µg/ml dilution and incubated at RT for 1 hour.