

## ARG58906 anti-GLO1 antibody

Package: 100 µl  
Store at: -20°C

### Summary

Product Description	Rabbit Polyclonal antibody recognizes GLO1
Tested Reactivity	Hu
Tested Application	FACS, WB
Host	Rabbit
Clonality	Polyclonal
Isotype	IgG
Target Name	GLO1
Species	Human
Immunogen	Synthetic peptide derived from Human GLO1.
Conjugation	Un-conjugated
Alternate Names	GLO1; Glyoxalase I; Lactoylglutathione Lyase; GLOD1; S-D-Lactoylglutathione Methylglyoxal Lyase; Ketone-Aldehyde Mutase; Methylglyoxalase; Aldoketomutase; EC 4.4.1.5; Glx I; Epididymis Secretory Protein Li 74; Glyoxalase Domain Containing 1; Lactoyl Glutathione Lyase; HEL-S-74; GLYI

### Application Instructions

Application table	Application	Dilution
	FACS	1:50
	WB	1:500 - 1:2000
Application Note	* The dilutions indicate recommended starting dilutions and the optimal dilutions or concentrations should be determined by the scientist.	
Observed Size	21kDa	

### Properties

Form	Liquid
Purification	Affinity purified.
Buffer	PBS (pH 7.4), 150mM NaCl, 0.02% Sodium azide and 50% Glycerol.
Preservative	0.02% Sodium azide
Stabilizer	50% Glycerol
Storage instruction	For continuous use, store undiluted antibody at 2-8°C for up to a week. For long-term storage, aliquot and store at -20°C. Storage in frost free freezers is not recommended. Avoid repeated freeze/thaw cycles. Suggest spin the vial prior to opening. The antibody solution should be gently mixed before use.
Note	For laboratory research only, not for drug, diagnostic or other use.

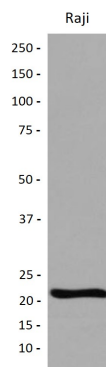
## Bioinformation

---

Gene Symbol	GLO1
Gene Full Name	glyoxalase I
Background	The enzyme encoded by this gene is responsible for the catalysis and formation of S-lactoyl-glutathione from methylglyoxal condensation and reduced glutathione. Glyoxalase I is linked to HLA and is localized to 6p21.3-p21.1, between HLA and the centromere. [provided by RefSeq, Jul 2008]
Function	Catalyzes the conversion of hemimercaptal, formed from methylglyoxal and glutathione, to S-lactoylglutathione. [UniProt]
Calculated Mw	21 kDa
PTM	Acetylation, Disulfide bond, Glutathionylation, Phosphoprotein. [UniProt]

## Images

---



ARG58906 anti-GLO1 antibody WB image

Western blot: Raji cell lysate stained with ARG58906 anti-GLO1 antibody.