

ARG58865 anti-GPLD1 antibody

Package: 100 µl
Store at: -20°C

Summary

Product Description	Rabbit Polyclonal antibody recognizes GPLD1
Tested Reactivity	Hu, Ms, Rat
Tested Application	ICC/IF, IHC-P, WB
Host	Rabbit
Clonality	Polyclonal
Isotype	IgG
Target Name	GPLD1
Species	Human
Immunogen	Recombinant fusion protein corresponding to aa. 24-160 of Human GPLD1 (NP_001494.2).
Conjugation	Un-conjugated
Alternate Names	GPI-PLD; Phosphatidylinositol-glycan-specific phospholipase D; GPIPLDM; Glycosyl-phosphatidylinositol-specific phospholipase D; EC 3.1.4.50; PIGPLD1; PI-G PLD; GPI-specific phospholipase D; Glycoprotein phospholipase D; PIGPLD; PLD; GPIPLD

Application Instructions

Application table	Application	Dilution
	ICC/IF	1:50 - 1:200
	IHC-P	1:50 - 1:200
	WB	1:500 - 1:2000
Application Note	* The dilutions indicate recommended starting dilutions and the optimal dilutions or concentrations should be determined by the scientist.	
Observed Size	100 kDa	

Properties

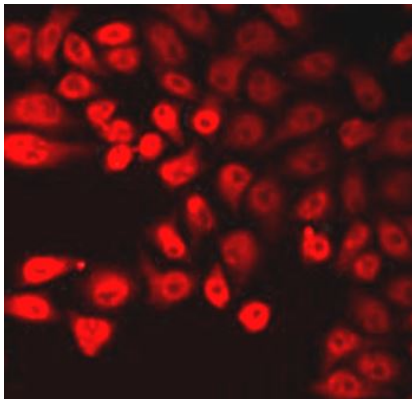
Form	Liquid
Purification	Affinity purified.
Buffer	PBS (pH 7.3), 0.02% Sodium azide and 50% Glycerol.
Preservative	0.02% Sodium azide
Stabilizer	50% Glycerol
Storage instruction	For continuous use, store undiluted antibody at 2-8°C for up to a week. For long-term storage, aliquot and store at -20°C. Storage in frost free freezers is not recommended. Avoid repeated freeze/thaw cycles. Suggest spin the vial prior to opening. The antibody solution should be gently mixed before use.

Note For laboratory research only, not for drug, diagnostic or other use.

Bioinformation

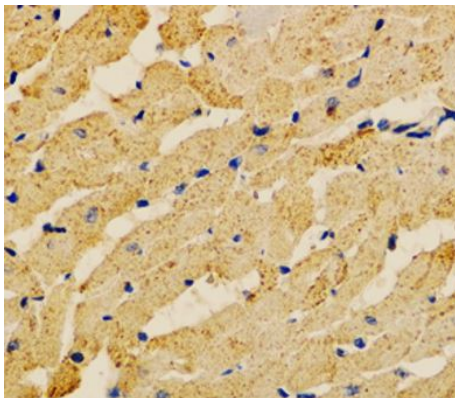
Gene Symbol	GPLD1
Gene Full Name	glycosylphosphatidylinositol specific phospholipase D1
Background	Many proteins are tethered to the extracellular face of eukaryotic plasma membranes by a glycosylphosphatidylinositol (GPI) anchor. The GPI-anchor is a glycolipid found on many blood cells. The protein encoded by this gene is a GPI degrading enzyme. Glycosylphosphatidylinositol specific phospholipase D1 hydrolyzes the inositol phosphate linkage in proteins anchored by phosphatidylinositol glycans, thereby releasing the attached protein from the plasma membrane. [provided by RefSeq, Jul 2008]
Function	This protein hydrolyzes the inositol phosphate linkage in proteins anchored by phosphatidylinositol glycans (GPI-anchor) thus releasing these proteins from the membrane. [UniProt]
Calculated Mw	92 kDa
Cellular Localization	Secreted. [UniProt]

Images



ARG58865 anti-GPLD1 antibody ICC/IF image

Immunofluorescence: U2OS cells stained with ARG58865 anti-GPLD1 antibody.



ARG58865 anti-GPLD1 antibody IHC-P image

Immunohistochemistry: Paraffin-embedded Rat heart stained with ARG58865 anti-GPLD1 antibody at 1:100 dilution.