

ARG58852 anti-GDNF Receptor alpha 3 antibody

Package: 100 µl
Store at: -20°C

Summary

Product Description	Rabbit Polyclonal antibody recognizes GDNF Receptor alpha 3
Tested Reactivity	Hu, Ms
Tested Application	WB
Host	Rabbit
Clonality	Polyclonal
Isotype	IgG
Target Name	GDNF Receptor alpha 3
Species	Human
Immunogen	Recombinant fusion protein corresponding to aa. 32-240 of Human GDNF Receptor alpha 3 (NP_001487.2).
Conjugation	Un-conjugated
Alternate Names	GDNFR-alpha-3; GFR-alpha-3; GDNF family receptor alpha-3; GDNFR3; GDNF receptor alpha-3

Application Instructions

Application table	Application	Dilution
	WB	1:500 - 1:2000
Application Note	* The dilutions indicate recommended starting dilutions and the optimal dilutions or concentrations should be determined by the scientist.	
Positive Control	BxPC3	
Observed Size	45 kDa	

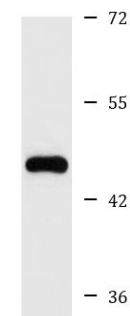
Properties

Form	Liquid
Purification	Affinity purified.
Buffer	PBS (pH 7.3), 0.02% Sodium azide and 50% Glycerol.
Preservative	0.02% Sodium azide
Stabilizer	50% Glycerol
Storage instruction	For continuous use, store undiluted antibody at 2-8°C for up to a week. For long-term storage, aliquot and store at -20°C. Storage in frost free freezers is not recommended. Avoid repeated freeze/thaw cycles. Suggest spin the vial prior to opening. The antibody solution should be gently mixed before use.
Note	For laboratory research only, not for drug, diagnostic or other use.

Bioinformation

Gene Symbol	GFRA3
Gene Full Name	GDNF family receptor alpha 3
Background	The protein encoded by this gene is a glycosylphosphatidylinositol(GPI)-linked cell surface receptor and a member of the GDNF receptor family. It forms a signaling receptor complex with RET tyrosine kinase receptor and binds the ligand, artemin. [provided by RefSeq, Jul 2008]
Function	Receptor for the glial cell line-derived neurotrophic factor, ARTN (artemin). Mediates the artemin-induced autophosphorylation and activation of the RET receptor tyrosine kinase. [UniProt]
Calculated Mw	45 kDa
PTM	N-glycosylated. [UniProt]
Cellular Localization	Cell membrane, Lipid-anchor, GPI-anchor. [UniProt]

Images



BxPC3

ARG58852 anti-GDNF Receptor alpha 3 antibody WB image

Western blot: 25 µg of BxPC3 cell lysate stained with ARG58852 anti-GDNF Receptor alpha 3 antibody at 1:1000 dilution.