

ARG58839
anti-CD127 / IL7R antibodyPackage: 50 µg
Store at: -20°C

Summary

Product Description	Rabbit Polyclonal antibody recognizes CD127 / IL7R
Tested Reactivity	Hu
Predict Reactivity	Rat
Tested Application	FACS, WB
Host	Rabbit
Clonality	Polyclonal
Isotype	IgG
Target Name	CD127 / IL7R
Species	Human
Immunogen	Synthetic peptide corresponding to aa. 278-315 of Human CD127 (DHKKTLEHLCKKPRKLNLSFNPEFLDCQIHRVDDIQ).
Conjugation	Un-conjugated
Alternate Names	ILRA; CD127; IL-7R subunit alpha; IL-7R-alpha; IL7RA; CD antigen CD127; Interleukin-7 receptor subunit alpha; CDW127; CDw127; IL-7 receptor subunit alpha; IL-7RA

Application Instructions

Application table	Application	Dilution
	FACS	1:150 - 1:500
	WB	0.1 - 0.5 µg/ml
Application Note	* The dilutions indicate recommended starting dilutions and the optimal dilutions or concentrations should be determined by the scientist.	

Properties

Form	Liquid
Purification	Affinity purification with immunogen.
Buffer	0.9% NaCl, 0.2% Na ₂ HPO ₄ , 0.05% Sodium azide and 5% BSA.
Preservative	0.05% Sodium azide
Stabilizer	5% BSA
Concentration	0.5 mg/ml
Storage instruction	For continuous use, store undiluted antibody at 2-8°C for up to a week. For long-term storage, aliquot and store at -20°C or below. Storage in frost free freezers is not recommended. Avoid repeated freeze/thaw cycles. Suggest spin the vial prior to opening. The antibody solution should be gently mixed before use.

Bioinformation

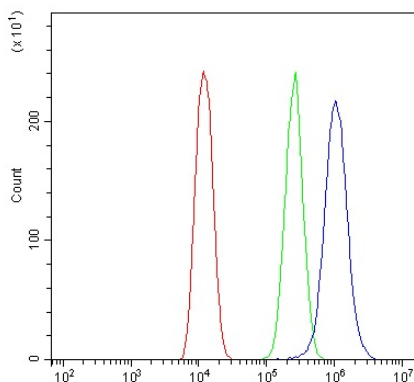
Gene Symbol	IL7R
Gene Full Name	interleukin 7 receptor
Background	The protein encoded by this gene is a receptor for interleukine 7 (IL7). The function of this receptor requires the interleukin 2 receptor, gamma chain (IL2RG), which is a common gamma chain shared by the receptors of various cytokines, including interleukine 2, 4, 7, 9, and 15. This protein has been shown to play a critical role in the V(D)J recombination during lymphocyte development. This protein is also found to control the accessibility of the TCR gamma locus by STAT5 and histone acetylation. Knockout studies in mice suggested that blocking apoptosis is an essential function of this protein during differentiation and activation of T lymphocytes. The functional defects in this protein may be associated with the pathogenesis of the severe combined immunodeficiency (SCID). Alternatively spliced transcript variants have been found for this gene. [provided by RefSeq, May 2014]
Function	Receptor for interleukin-7. Also acts as a receptor for thymic stromal lymphopoietin (TSLP). [UniProt]
Calculated Mw	52 kDa
PTM	N-glycosylated IL-7Ralpha binds IL7 300-fold more tightly than the unglycosylated form. [UniProt]
Cellular Localization	Isoform 1: Cell membrane; Single-pass type I membrane protein. [UniProt]

Images



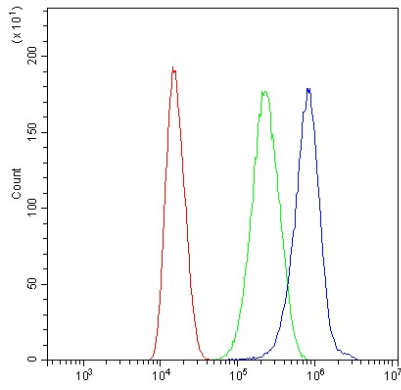
ARG58839 anti-CD127 / IL7R antibody WB image

Western blot: 22RV1 cell lysate stained with ARG58839 anti-CD127 / IL7R antibody at 0.5 $\mu\text{g}/\text{ml}$ dilution.



ARG58839 anti-CD127 / IL7R antibody FACS image

Flow Cytometry: U2OS cells were blocked with 10% normal goat serum and then stained with ARG58839 anti-CD127 / IL7R antibody (blue) at 1 $\mu\text{g}/10^6$ cells for 30 min at 20°C, followed by incubation with DyLight®488 labelled secondary antibody. Isotype control antibody (green) was rabbit IgG (1 $\mu\text{g}/10^6$ cells) used under the same conditions. Unlabelled sample (red) was also used as a control.



ARG58839 anti-CD127 / IL7R antibody FACS image

Flow Cytometry: U87 cells were blocked with 10% normal goat serum and then stained with ARG58839 anti-CD127 / IL7R antibody (blue) at 1 $\mu\text{g}/10^6$ cells for 30 min at 20°C, followed by incubation with DyLight®488 labelled secondary antibody. Isotype control antibody (green) was rabbit IgG (1 $\mu\text{g}/10^6$ cells) used under the same conditions. Unlabelled sample (red) was also used as a control.