

ARG58837
anti-GIP antibodyPackage: 50 µg
Store at: -20°C

Summary

Product Description	Rabbit Polyclonal antibody recognizes GIP
Tested Reactivity	Hu
Tested Application	IHC-P, WB
Host	Rabbit
Clonality	Polyclonal
Isotype	IgG
Target Name	GIP
Species	Human
Immunogen	Recombinant protein corresponding to Y52-Q93 of Human GIP.
Conjugation	Un-conjugated
Alternate Names	Glucose-dependent insulinotropic polypeptide; GIP; Incretin hormone; Gastric inhibitory polypeptide

Application Instructions

Application table	Application	Dilution
	IHC-P	0.5 - 1 µg/ml
	WB	0.1 - 0.5 µg/ml
Application Note	IHC-P: Antigen Retrieval: By heat mediation. * The dilutions indicate recommended starting dilutions and the optimal dilutions or concentrations should be determined by the scientist.	

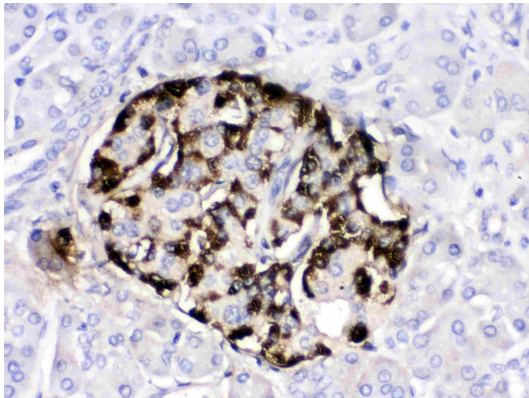
Properties

Form	Liquid
Purification	Affinity purification with immunogen.
Buffer	0.9% NaCl, 0.2% Na ₂ HPO ₄ , 0.05% Sodium azide and 5% BSA.
Preservative	0.05% Sodium azide
Stabilizer	5% BSA
Concentration	0.5 mg/ml
Storage instruction	For continuous use, store undiluted antibody at 2-8°C for up to a week. For long-term storage, aliquot and store at -20°C or below. Storage in frost free freezers is not recommended. Avoid repeated freeze/thaw cycles. Suggest spin the vial prior to opening. The antibody solution should be gently mixed before use.
Note	For laboratory research only, not for drug, diagnostic or other use.

Bioinformation

Gene Symbol	GIP
Gene Full Name	gastric inhibitory polypeptide
Background	This gene encodes an incretin hormone and belongs to the glucagon superfamily. The encoded protein is important in maintaining glucose homeostasis as it is a potent stimulator of insulin secretion from pancreatic beta-cells following food ingestion and nutrient absorption. This gene stimulates insulin secretion via its G protein-coupled receptor activation of adenylyl cyclase and other signal transduction pathways. It is a relatively poor inhibitor of gastric acid secretion. [provided by RefSeq, Jul 2008]
Function	Potent stimulator of insulin secretion and relatively poor inhibitor of gastric acid secretion. [UniProt]
Calculated Mw	17 kDa
Cellular Localization	Secreted. [UniProt]

Images



ARG58837 anti-GIP antibody IHC-P image

Immunohistochemistry: Paraffin-embedded Human pancreatic cancer stained with ARG58837 anti-GIP antibody at 1 μ g/ml dilution.



ARG58837 anti-GIP antibody WB image

Western blot: MCF-7 whole cell lysate stained with ARG58837 anti-GIP antibody at 0.5 μ g/ml dilution.