

## ARG58807 anti-GPR2 / CCR10 antibody

Package: 50 µg  
Store at: -20°C

### Summary

Product Description	Rabbit Polyclonal antibody recognizes GPR2 / CCR10
Tested Reactivity	Hu
Predict Reactivity	Ms, Rat, Hm
Tested Application	WB
Host	Rabbit
Clonality	Polyclonal
Isotype	IgG
Target Name	GPR2 / CCR10
Species	Human
Immunogen	Synthetic peptide corresponding to aa. 312-327 of Human GPR2 / CCR10 (FLGLRFRQDLRLLRG).
Conjugation	Un-conjugated
Alternate Names	GPR2; CC-CKR-10; CCR-10; C-C CKR-10; G-protein coupled receptor 2; C-C chemokine receptor type 10

### Application Instructions

Application table	Application	Dilution
	WB	0.1 - 0.5 µg/ml
Application Note	* The dilutions indicate recommended starting dilutions and the optimal dilutions or concentrations should be determined by the scientist.	

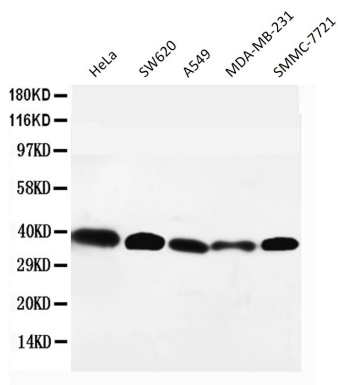
### Properties

Form	Liquid
Purification	Affinity purification with immunogen.
Buffer	0.9% NaCl, 0.2% Na <sub>2</sub> HPO <sub>4</sub> , 0.05% Thimerosal, 0.05% Sodium azide and 5% BSA.
Preservative	0.05% Thimerosal and 0.05% Sodium azide
Stabilizer	5% BSA
Concentration	0.5 mg/ml
Storage instruction	For continuous use, store undiluted antibody at 2-8°C for up to a week. For long-term storage, aliquot and store at -20°C or below. Storage in frost free freezers is not recommended. Avoid repeated freeze/thaw cycles. Suggest spin the vial prior to opening. The antibody solution should be gently mixed before use.
Note	For laboratory research only, not for drug, diagnostic or other use.

## Bioinformation

Gene Symbol	CCR10
Gene Full Name	chemokine (C-C motif) receptor 10
Background	<p>Chemokines are a group of small (approximately 8 to 14 kD), mostly basic, structurally related molecules that regulate cell trafficking of various types of leukocytes through interactions with a subset of 7-transmembrane, G protein-coupled receptors. Chemokines also play fundamental roles in the development, homeostasis, and function of the immune system, and they have effects on cells of the central nervous system as well as on endothelial cells involved in angiogenesis or angiostasis. Chemokines are divided into 2 major subfamilies, CXC and CC, based on the arrangement of the first 2 of the 4 conserved cysteine residues; the 2 cysteines are separated by a single amino acid in CXC chemokines and are adjacent in CC chemokines. CCR10 is the receptor for CCL27 (SCYA27; MIM 604833); CCR10-CCL27 interactions are involved in T cell-mediated skin inflammation (Homey et al., 2002 [PubMed 11821900]).[supplied by OMIM, Mar 2008]</p>
Function	Receptor for chemokines SCYA27 and SCYA28. Subsequently transduces a signal by increasing the intracellular calcium ions level and stimulates chemotaxis in a pre-B cell line. [UniProt]
Calculated Mw	38 kDa
Cellular Localization	Cell membrane; Multi-pass membrane protein. [UniProt]

## Images



ARG58807 anti-GPR2 / CCR10 antibody WB image

Western blot: HeLa, SW620, A549, MDA-MB-231 and SMMC-7721 cell lysates stained with ARG58807 anti-GPR2 / CCR10 antibody.