

ARG58784 anti-hemoglobin beta + delta antibody

Package: 50 µg
Store at: -20°C

Summary

Product Description	Rabbit Polyclonal antibody recognizes hemoglobin beta + delta
Tested Reactivity	Hu, Ms, Rat
Tested Application	IHC-P, WB
Host	Rabbit
Clonality	Polyclonal
Isotype	IgG
Target Name	hemoglobin beta + delta
Species	Human
Immunogen	Recombinant protein corresponding to V2-H147 of Human hemoglobin delta.
Conjugation	Un-conjugated
Alternate Names	Delta-globin; Hemoglobin delta chain; Hemoglobin subunit delta

Application Instructions

Application table	Application	Dilution
	IHC-P	0.5 - 1 µg/ml
	WB	0.1 - 0.5 µg/ml
Application Note	IHC-P: Antigen Retrieval: Heat mediated was performed in Citrate buffer (pH 6.0) for 20 min. * The dilutions indicate recommended starting dilutions and the optimal dilutions or concentrations should be determined by the scientist.	

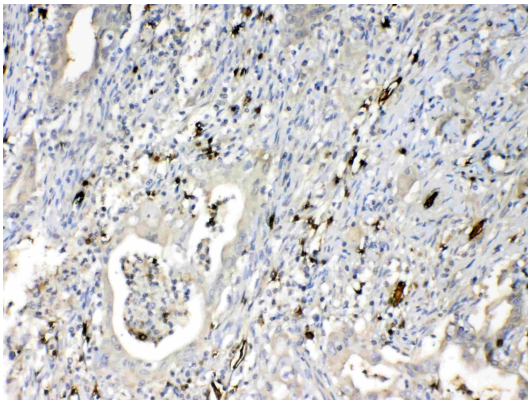
Properties

Form	Liquid
Purification	Affinity purification with immunogen.
Buffer	0.9% NaCl, 0.2% Na ₂ HPO ₄ , 0.05% Sodium azide and 5% BSA.
Preservative	0.05% Sodium azide
Stabilizer	5% BSA
Concentration	0.5 mg/ml
Storage instruction	For continuous use, store undiluted antibody at 2-8°C for up to a week. For long-term storage, aliquot and store at -20°C or below. Storage in frost free freezers is not recommended. Avoid repeated freeze/thaw cycles. Suggest spin the vial prior to opening. The antibody solution should be gently mixed before use.
Note	For laboratory research only, not for drug, diagnostic or other use.

Bioinformation

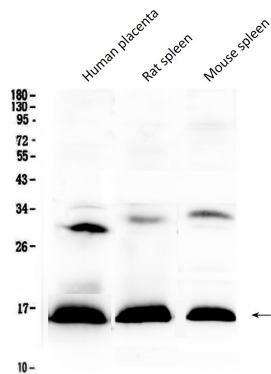
Gene Symbol	HBD
Gene Full Name	hemoglobin, delta
Background	The delta (HBD) and beta (HBB) genes are normally expressed in the adult: two alpha chains plus two beta chains constitute HbA, which in normal adult life comprises about 97% of the total hemoglobin. Two alpha chains plus two delta chains constitute HbA-2, which with HbF comprises the remaining 3% of adult hemoglobin. Five beta-like globin genes are found within a 45 kb cluster on chromosome 11 in the following order: 5'-epsilon--Ggamma--Agamma--delta--beta-3'. Mutations in the delta-globin gene are associated with beta-thalassemia. [provided by RefSeq, Jul 2008]
Function	Involved in oxygen transport from the lung to the various peripheral tissues. [UniProt]
Calculated Mw	16 kDa

Images



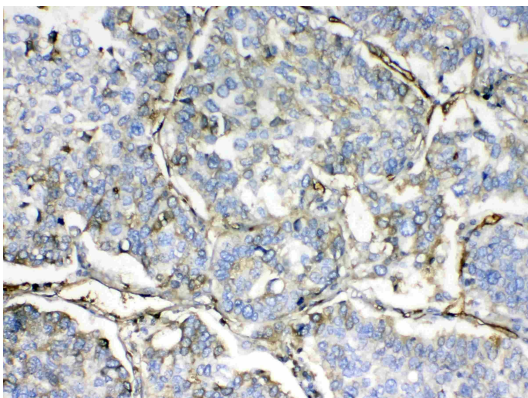
ARG58784 anti-hemoglobin beta + delta antibody IHC-P image

Immunohistochemistry: Paraffin-embedded Human intestinal cancer tissue. Antigen Retrieval: Heat mediated was performed in Citrate buffer (pH 6.0, epitope retrieval solution) for 20 min. The tissue section was blocked with 10% goat serum. The tissue section was then stained with ARG58784 anti-hemoglobin beta + delta antibody at 1 µg/ml, overnight at 4°C.



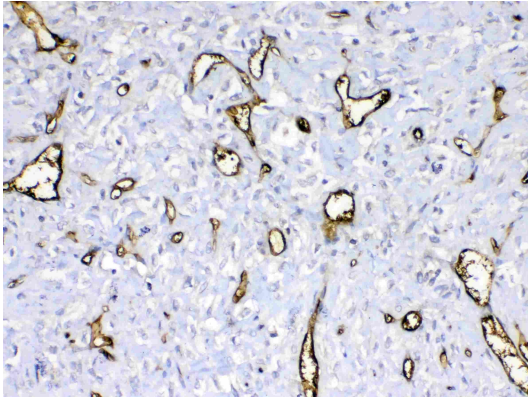
ARG58784 anti-hemoglobin beta + delta antibody WB image

Western blot: 50 µg of samples under reducing conditions. Human placenta, Rat spleen, Mouse spleen lysates stained with ARG58784 anti-hemoglobin beta + delta antibody at 0.5 µg/ml, overnight at 4°C.



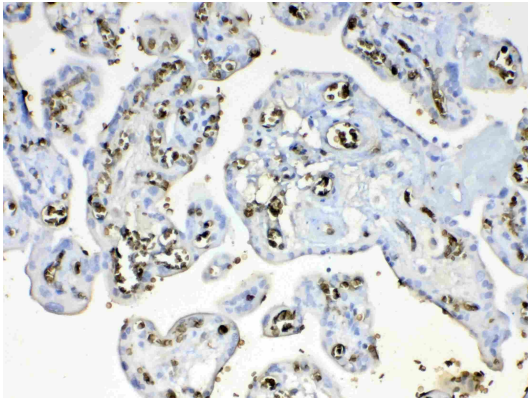
ARG58784 anti-hemoglobin beta + delta antibody IHC-P image

Immunohistochemistry: Paraffin-embedded Human lung cancer tissue. Antigen Retrieval: Heat mediated was performed in Citrate buffer (pH 6.0, epitope retrieval solution) for 20 min. The tissue section was blocked with 10% goat serum. The tissue section was then stained with ARG58784 anti-hemoglobin beta + delta antibody at 1 µg/ml, overnight at 4°C.



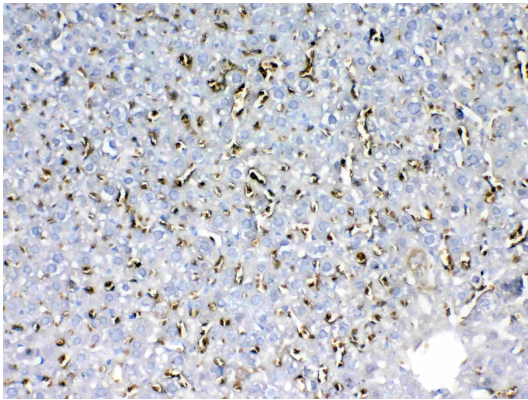
ARG58784 anti-hemoglobin beta + delta antibody IHC-P image

Immunohistochemistry: Paraffin-embedded Human mammary cancer tissue. Antigen Retrieval: Heat mediated was performed in Citrate buffer (pH 6.0, epitope retrieval solution) for 20 min. The tissue section was blocked with 10% goat serum. The tissue section was then stained with ARG58784 anti-hemoglobin beta + delta antibody at 1 $\mu\text{g}/\text{ml}$, overnight at 4°C.



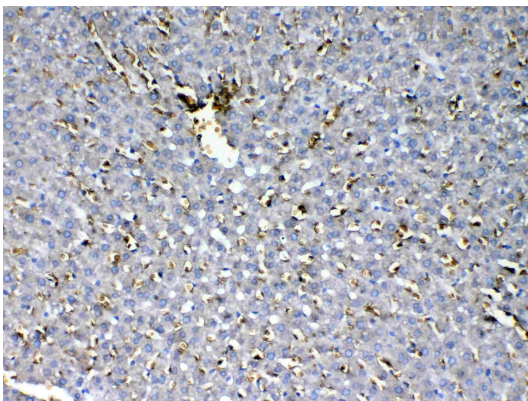
ARG58784 anti-hemoglobin beta + delta antibody IHC-P image

Immunohistochemistry: Paraffin-embedded Human placenta tissue. Antigen Retrieval: Heat mediated was performed in Citrate buffer (pH 6.0, epitope retrieval solution) for 20 min. The tissue section was blocked with 10% goat serum. The tissue section was then stained with ARG58784 anti-hemoglobin beta + delta antibody at 1 $\mu\text{g}/\text{ml}$, overnight at 4°C.



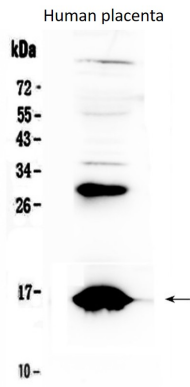
ARG58784 anti-hemoglobin beta + delta antibody IHC-P image

Immunohistochemistry: Paraffin-embedded Mouse liver tissue. Antigen Retrieval: Heat mediated was performed in Citrate buffer (pH 6.0, epitope retrieval solution) for 20 min. The tissue section was blocked with 10% goat serum. The tissue section was then stained with ARG58784 anti-hemoglobin beta + delta antibody at 1 $\mu\text{g}/\text{ml}$, overnight at 4°C.



ARG58784 anti-hemoglobin beta + delta antibody IHC-P image

Immunohistochemistry: Paraffin-embedded Rat liver tissue. Antigen Retrieval: Heat mediated was performed in Citrate buffer (pH 6.0, epitope retrieval solution) for 20 min. The tissue section was blocked with 10% goat serum. The tissue section was then stained with ARG58784 anti-hemoglobin beta + delta antibody at 1 $\mu\text{g}/\text{ml}$, overnight at 4°C.



ARG58784 anti-hemoglobin beta + delta antibody WB image

Western blot: 50 μ g of samples under reducing conditions. Human placenta lysate stained with ARG58784 anti-hemoglobin beta + delta antibody at 0.5 μ g/ml, overnight at 4°C.