

ARG58750
anti-CD223 / LAG3 antibody [1G4]Package: 50 µg
Store at: -20°C

Summary

| | |
|---------------------|---|
| Product Description | Mouse Monoclonal [1G4] antibody recognizes CD223 / LAG3 |
| Tested Reactivity | Hu |
| Tested Application | ICC/IF, IHC-P, WB |
| Host | Mouse |
| Clonality | Monoclonal |
| Clone | 1G4 |
| Isotype | IgG1, kappa |
| Target Name | CD223 / LAG3 |
| Species | Human |
| Immunogen | Extracellular domain of Human CD223 / LAG3. |
| Conjugation | Un-conjugated |
| Alternate Names | CD antigen CD223; CD223; Protein FDC; Lymphocyte activation gene 3 protein; LAG-3 |

Application Instructions

| Application table | Application | Dilution |
|-------------------|--|--------------|
| | ICC/IF | 1 - 10 µg/ml |
| | IHC-P | 5 µg/ml |
| | WB | 0.25 µg/ml |
| Application Note | * The dilutions indicate recommended starting dilutions and the optimal dilutions or concentrations should be determined by the scientist. | |
| Positive Control | Human lymphoma tissue and spleen tissue. | |
| Observed Size | ~ 60, 70, 80 kDa | |

Properties

| | |
|---------------------|--|
| Form | Liquid |
| Purification | Purification with Protein A. |
| Buffer | PBS and 0.02% Sodium azide. |
| Preservative | 0.02% Sodium azide |
| Concentration | 1 mg/ml |
| Storage instruction | For continuous use, store undiluted antibody at 2-8°C for up to a week. For long-term storage, aliquot and store at -20°C or below. Storage in frost free freezers is not recommended. Avoid repeated freeze/thaw cycles. Suggest spin the vial prior to opening. The antibody solution should be gently mixed |

before use.

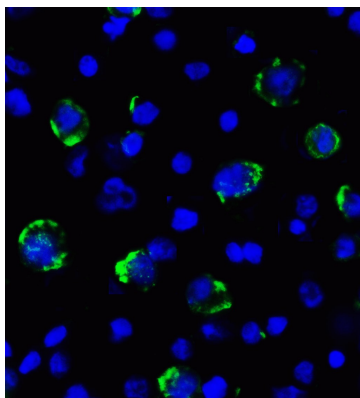
Note

For laboratory research only, not for drug, diagnostic or other use.

Bioinformation

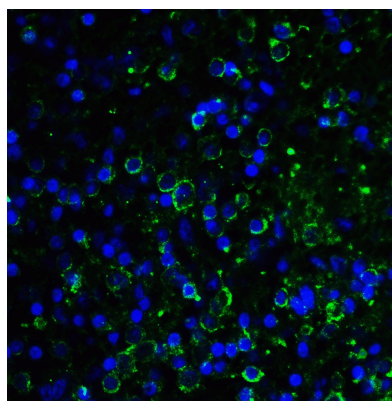
| | |
|----------------|--|
| Gene Symbol | LAG3 |
| Gene Full Name | lymphocyte-activation gene 3 |
| Background | Lymphocyte-activation protein 3 belongs to Ig superfamily and contains 4 extracellular Ig-like domains. The LAG3 gene contains 8 exons. The sequence data, exon/intron organization, and chromosomal localization all indicate a close relationship of LAG3 to CD4. [provided by RefSeq, Jul 2008] |
| Function | Involved in lymphocyte activation. Binds to HLA class-II antigens. [UniProt] |
| Calculated Mw | 57 kDa |

Images



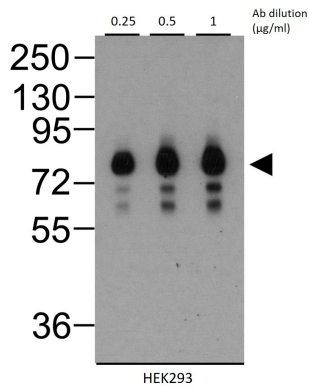
ARG58750 anti-CD223 / LAG3 antibody [1G4] IF image

Immunofluorescence: LAG3 over expressing HEK293 cells stained with ARG58750 anti-CD223 / LAG3 antibody [1G4] at 2 µg/ml dilution.



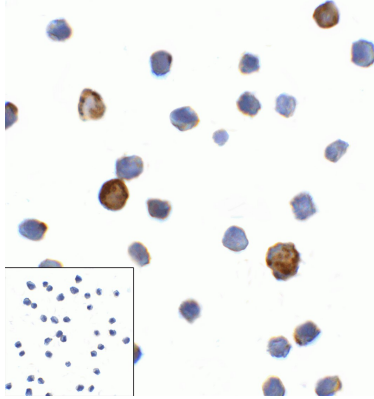
ARG58750 anti-CD223 / LAG3 antibody [1G4] IHC image

Immunohistochemistry: LAG3 over expressing Human spleen tissue stained with ARG58750 anti-CD223 / LAG3 antibody [1G4] at 10 µg/ml dilution.



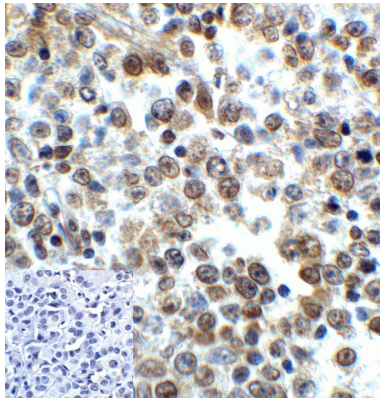
ARG58750 anti-CD223 / LAG3 antibody [1G4] WB image

Western blot: LAG3 over expressing HEK293 cells stained with ARG58750 anti-CD223 / LAG3 antibody [1G4] at 0.25, 0.5 and 1 µg/ml dilution.



ARG58750 anti-CD223 / LAG3 antibody [1G4] ICC image

Immunocytochemistry: LAG3 over expressing HEK293 cells stained with ARG58750 anti-CD223 / LAG3 antibody [1G4]. Lower left (control): Mouse IgG antibody at 1 µg/ml dilution.



ARG58750 anti-CD223 / LAG3 antibody [1G4] IHC-P image

Immunohistochemistry: Human lymphoma tissue stained with ARG58750 anti-CD223 / LAG3 antibody [1G4]. Lower left (control): Mouse IgG at 5 µg/ml dilution.