

ARG58731 anti-Galactosylceramidase antibody

Package: 100 µl
Store at: -20°C

Summary

| | |
|---------------------|--|
| Product Description | Rabbit Polyclonal antibody recognizes Galactosylceramidase |
| Tested Reactivity | Hu, Ms, Rat |
| Tested Application | ICC/IF, IHC-P, WB |
| Host | Rabbit |
| Clonality | Polyclonal |
| Isotype | IgG |
| Target Name | Galactosylceramidase |
| Species | Human |
| Immunogen | Recombinant fusion protein corresponding to aa. 40-300 of Human Galactosylceramidase (NP_000144.2). |
| Conjugation | Un-conjugated |
| Alternate Names | Galactocerebroside beta-galactosidase; Galactosylceramidase; Galactocerebrosidase; Galactosylceramide beta-galactosidase; GALCERase; EC 3.2.1.46 |

Application Instructions

| Application table | Application | Dilution |
|-------------------|--|----------------|
| | ICC/IF | 1:50 - 1:200 |
| | IHC-P | 1:50 - 1:200 |
| | WB | 1:500 - 1:2000 |
| Application Note | * The dilutions indicate recommended starting dilutions and the optimal dilutions or concentrations should be determined by the scientist. | |
| Positive Control | 293T | |
| Observed Size | 77 kDa | |

Properties

| | |
|---------------------|---|
| Form | Liquid |
| Purification | Affinity purified. |
| Buffer | PBS (pH 7.3), 0.02% Sodium azide and 50% Glycerol. |
| Preservative | 0.02% Sodium azide |
| Stabilizer | 50% Glycerol |
| Storage instruction | For continuous use, store undiluted antibody at 2-8°C for up to a week. For long-term storage, aliquot and store at -20°C. Storage in frost free freezers is not recommended. Avoid repeated freeze/thaw cycles. Suggest spin the vial prior to opening. The antibody solution should be gently mixed before use. |

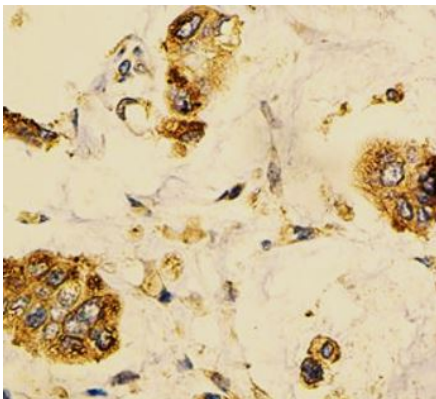
Note

For laboratory research only, not for drug, diagnostic or other use.

Bioinformation

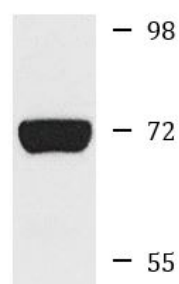
| | |
|-----------------------|---|
| Gene Symbol | GALC |
| Gene Full Name | galactosylceramidase |
| Background | This gene encodes a lysosomal protein which hydrolyzes the galactose ester bonds of galactosylceramide, galactosylsphingosine, lactosylceramide, and monogalactosyldiglyceride. Mutations in this gene have been associated with Krabbe disease, also known as globoid cell leukodystrophy. Alternate transcriptional splice variants, encoding different isoforms, have been characterized. [provided by RefSeq, Jul 2008] |
| Function | Hydrolyzes the galactose ester bonds of galactosylceramide, galactosylsphingosine, lactosylceramide, and monogalactosyldiglyceride. Enzyme with very low activity responsible for the lysosomal catabolism of galactosylceramide, a major lipid in myelin, kidney and epithelial cells of small intestine and colon. [UniProt] |
| Calculated Mw | 77 kDa |
| Cellular Localization | Lysosome. [UniProt] |

Images



ARG58731 anti-Galactosylceramidase antibody IHC-P image

Immunohistochemistry: Paraffin-embedded Human gastric cancer stained with ARG58731 anti-Galactosylceramidase antibody at 1:100 dilution.



293T

ARG58731 anti-Galactosylceramidase antibody WB image

Western blot: 25 µg of 293T cell lysate stained with ARG58731 anti-Galactosylceramidase antibody at 1:1000 dilution.