

ARG58719
anti-CD223 / LAG3 antibodyPackage: 100 µl
Store at: -20°C

Summary

| | |
|---------------------|-------------------------------------------------------------------------------------|
| Product Description | Rabbit Polyclonal antibody recognizes CD223 / LAG3 |
| Tested Reactivity | Hu, Ms, Rat |
| Tested Application | WB |
| Host | Rabbit |
| Clonality | Polyclonal |
| Isotype | IgG |
| Target Name | CD223 / LAG3 |
| Species | Human |
| Immunogen | Recombinant fusion protein corresponding to aa. 29-170 of Human LAG3 (NP_002277.4). |
| Conjugation | Un-conjugated |
| Alternate Names | CD antigen CD223; CD223; Protein FDC; Lymphocyte activation gene 3 protein; LAG-3 |

Application Instructions

| | | |
|-------------------|--------------------------------------------------------------------------------------------------------------------------------------------|-----------------|
| Application table | Application | Dilution |
| | WB | 1:1000 - 1:4000 |
| Application Note | * The dilutions indicate recommended starting dilutions and the optimal dilutions or concentrations should be determined by the scientist. | |
| Positive Control | Raji | |
| Observed Size | 72 kDa | |

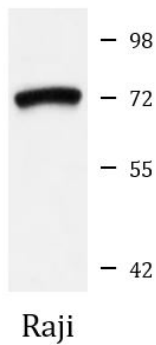
Properties

| | |
|---------------------|-------------------------------------------------------------------------------------------------------------------------------------------------------------------------------------------------------------------------------------------------------------------------------------------------------------------|
| Form | Liquid |
| Purification | Affinity purified. |
| Buffer | PBS (pH 7.3), 0.02% Sodium azide and 50% Glycerol. |
| Preservative | 0.02% Sodium azide |
| Stabilizer | 50% Glycerol |
| Storage instruction | For continuous use, store undiluted antibody at 2-8°C for up to a week. For long-term storage, aliquot and store at -20°C. Storage in frost free freezers is not recommended. Avoid repeated freeze/thaw cycles. Suggest spin the vial prior to opening. The antibody solution should be gently mixed before use. |
| Note | For laboratory research only, not for drug, diagnostic or other use. |

Bioinformation

| | |
|-----------------------|----------------------------------------------------------------------------------------------------------------------------------------------------------------------------------------------------------------------------------------------------------------------------------------------------|
| Gene Symbol | LAG3 |
| Gene Full Name | lymphocyte-activation gene 3 |
| Background | Lymphocyte-activation protein 3 belongs to Ig superfamily and contains 4 extracellular Ig-like domains. The LAG3 gene contains 8 exons. The sequence data, exon/intron organization, and chromosomal localization all indicate a close relationship of LAG3 to CD4. [provided by RefSeq, Jul 2008] |
| Function | Involved in lymphocyte activation. Binds to HLA class-II antigens. [UniProt] |
| Calculated Mw | 57 kDa |
| Cellular Localization | Membrane, Single-pass type I membrane protein. [UniProt] |

Images



ARG58719 anti-CD223 / LAG3 antibody WB image

Western blot: 25 µg of Raji cell lysate stained with ARG58719 anti-CD223 / LAG3 antibody at 1:1000 dilution.