

ARG58714 anti-GAS2 antibody

Package: 100 µl
Store at: -20°C

Summary

Product Description	Rabbit Polyclonal antibody recognizes GAS2
Tested Reactivity	Hu, Ms
Tested Application	IHC-P, WB
Host	Rabbit
Clonality	Polyclonal
Isotype	IgG
Target Name	GAS2
Species	Human
Immunogen	Recombinant fusion protein corresponding to aa. 1-100 of Human GAS2 (NP_005247.1).
Conjugation	Un-conjugated
Alternate Names	Growth arrest-specific protein 2; GAS-2

Application Instructions

Application table	Application	Dilution
	IHC-P	1:50 - 1:200
	WB	1:500 - 1:2000
Application Note	* The dilutions indicate recommended starting dilutions and the optimal dilutions or concentrations should be determined by the scientist.	
Positive Control	Mouse kidney	
Observed Size	37 kDa	

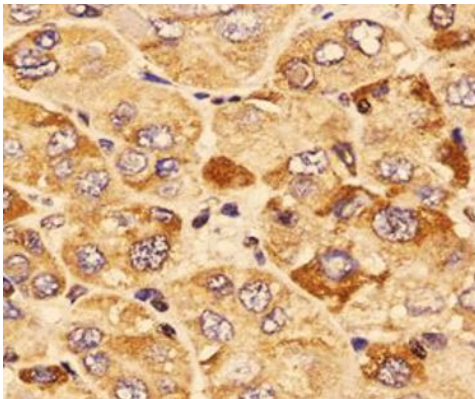
Properties

Form	Liquid
Purification	Affinity purified.
Buffer	PBS (pH 7.3), 0.02% Sodium azide and 50% Glycerol.
Preservative	0.02% Sodium azide
Stabilizer	50% Glycerol
Storage instruction	For continuous use, store undiluted antibody at 2-8°C for up to a week. For long-term storage, aliquot and store at -20°C. Storage in frost free freezers is not recommended. Avoid repeated freeze/thaw cycles. Suggest spin the vial prior to opening. The antibody solution should be gently mixed before use.
Note	For laboratory research only, not for drug, diagnostic or other use.

Bioinformation

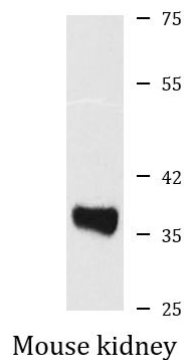
Gene Symbol	GAS2
Gene Full Name	growth arrest-specific 2
Background	The protein encoded by this gene is a caspase-3 substrate that plays a role in regulating microfilament and cell shape changes during apoptosis. It can also modulate cell susceptibility to p53-dependent apoptosis by inhibiting calpain activity. Multiple alternatively spliced variants, encoding the same protein, have been identified. [provided by RefSeq, Jan 2009]
Function	May play a role in apoptosis by acting as a cell death substrate for caspases. Is cleaved during apoptosis and the cleaved form induces dramatic rearrangements of the actin cytoskeleton and potent changes in the shape of the affected cells. May be involved in the membrane ruffling process (By similarity). [UniProt]
Calculated Mw	35 kDa
PTM	Cleaved, during apoptosis, on a specific aspartic residue by caspases. Phosphorylated on serine residues during the G0-G1 transition phase. [UniProt]
Cellular Localization	Cytoplasm, cytoskeleton, Membrane, Peripheral membrane protein. [UniProt]

Images



ARG58714 anti-GAS2 antibody IHC-P image

Immunohistochemistry: Paraffin-embedded Human liver cancer stained with ARG58714 anti-GAS2 antibody at 1:200 dilution.



ARG58714 anti-GAS2 antibody WB image

Western blot: 25 µg of Mouse kidney lysate stained with ARG58714 anti-GAS2 antibody at 1:1000 dilution.