

ARG58697 anti-GAS6 antibody

Package: 50 µg
Store at: -20°C

Summary

Product Description	Rabbit Polyclonal antibody recognizes GAS6
Tested Reactivity	Hu, Ms, Rat
Tested Application	FACS, ICC/IF, IHC-P, WB
Host	Rabbit
Clonality	Polyclonal
Isotype	IgG
Target Name	GAS6
Species	Human
Immunogen	Recombinant protein corresponding to M488-S660 of Human GAS6.
Conjugation	Un-conjugated
Alternate Names	Growth arrest-specific protein 6; AXLLG; AXSF; GAS-6; AXL receptor tyrosine kinase ligand

Application Instructions

Application table	Application	Dilution
	FACS	1:150 - 1:500
	ICC/IF	1:200 - 1:1000
	IHC-P	0.5 - 1 µg/ml
	WB	0.1 - 0.5 µg/ml

Application Note IHC-P: Antigen Retrieval: Heat mediation was performed in Citrate buffer (pH 6.0) for 20 min.
* The dilutions indicate recommended starting dilutions and the optimal dilutions or concentrations should be determined by the scientist.

Properties

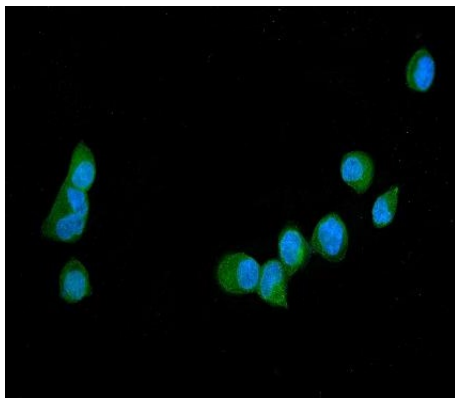
Form	Liquid
Purification	Affinity purification with immunogen.
Buffer	0.9% NaCl, 0.2% Na ₂ HPO ₄ , 0.05% Sodium azide and 5% BSA.
Preservative	0.05% Sodium azide
Stabilizer	5% BSA
Concentration	0.5 mg/ml
Storage instruction	For continuous use, store undiluted antibody at 2-8°C for up to a week. For long-term storage, aliquot and store at -20°C or below. Storage in frost free freezers is not recommended. Avoid repeated freeze/thaw cycles. Suggest spin the vial prior to opening. The antibody solution should be gently mixed before use.

Note For laboratory research only, not for drug, diagnostic or other use.

Bioinformation

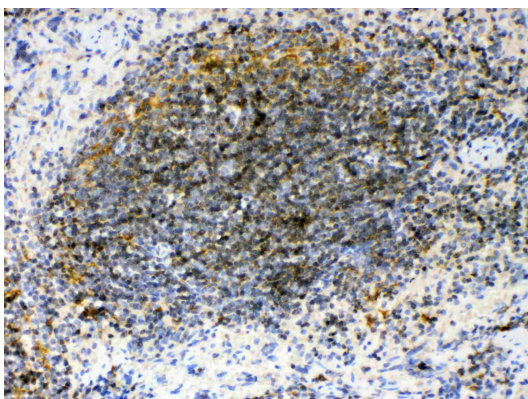
Gene Symbol	GAS6
Gene Full Name	growth arrest-specific 6
Background	This gene encodes a gamma-carboxyglutamic acid (Gla)-containing protein thought to be involved in the stimulation of cell proliferation. This gene is frequently overexpressed in many cancers and has been implicated as an adverse prognostic marker. Elevated protein levels are additionally associated with a variety of disease states, including venous thromboembolic disease, systemic lupus erythematosus, chronic renal failure, and preeclampsia. [provided by RefSeq, Aug 2014]
Function	Ligand for tyrosine-protein kinase receptors AXL, TYRO3 and MER whose signaling is implicated in cell growth and survival, cell adhesion and cell migration. GAS6/AXL signaling plays a role in various processes such as endothelial cell survival during acidification by preventing apoptosis, optimal cytokine signaling during human natural killer cell development, hepatic regeneration, gonadotropin-releasing hormone neuron survival and migration, platelet activation, or regulation of thrombotic responses. [UniProt]
Calculated Mw	75 kDa
PTM	Isoform 1 is proteolytically processed after secretion to yield a N-terminal 36 kDa protein and a C-terminal 50 kDa protein including the laminin G-like domains which activates AXL. Gamma-carboxyglutamate residues are formed by vitamin K dependent carboxylation. These residues are essential for the binding of calcium. [UniProt]
Cellular Localization	Secreted. [UniProt]

Images



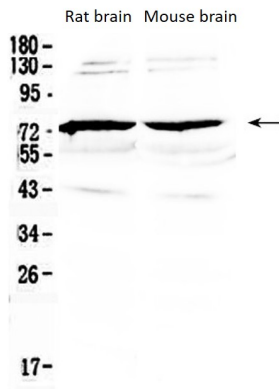
ARG58697 anti-GAS6 antibody ICC/IF image

Immunofluorescence: A431 cells were blocked with 10% goat serum and then stained with ARG58697 anti-GAS6 antibody (green) at 5 µg/ml dilution, overnight at 4°C. DAPI (blue) for nuclear staining.



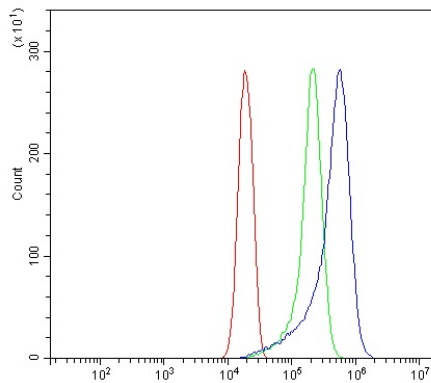
ARG58697 anti-GAS6 antibody IHC-P image

Immunohistochemistry: Paraffin-embedded Mouse spleen tissues. Antigen Retrieval: Heat mediated was performed in Citrate buffer (pH 6.0) for 20 min. The tissue section was blocked with 10% Goat serum. The tissue section was then stained with 1 µg/ml ARG58697 anti-GAS6 antibody overnight at 4°C.



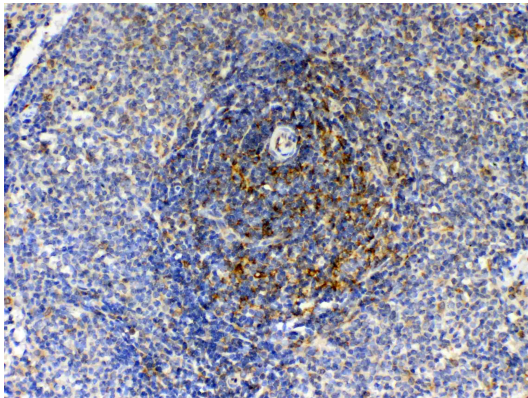
ARG58697 anti-GAS6 antibody WB image

Western blot: 50 μg of Rat brain and Mouse brain lysates stained with ARG58697 anti-GAS6 antibody at 0.5 $\mu\text{g}/\text{ml}$ overnight at 4°C, under reducing conditions.



ARG58697 anti-GAS6 antibody FACS image

Flow Cytometry: THP-1 cells were blocked with 10% normal goat serum and then stained with ARG58697 anti-GAS6 antibody (blue) at 1 $\mu\text{g}/10^6$ cells for 30 min at 20°C, followed by incubation with DyLight®488 labelled secondary antibody. Isotype control antibody (green) was rabbit IgG (1 $\mu\text{g}/10^6$ cells) used under the same conditions. Unlabelled sample (red) was also used as a control.



ARG58697 anti-GAS6 antibody IHC-P image

Immunohistochemistry: Paraffin-embedded Rat spleen tissues. Antigen Retrieval: Heat mediated was performed in Citrate buffer (pH 6.0) for 20 min. The tissue section was blocked with 10% Goat serum. The tissue section was then stained with 1 $\mu\text{g}/\text{ml}$ ARG58697 anti-GAS6 antibody overnight at 4°C.