

ARG58667 anti-FECH antibody

Package: 100 µl
Store at: -20°C

Summary

Product Description	Rabbit Polyclonal antibody recognizes FECH
Tested Reactivity	Hu, Ms, Rat
Tested Application	IHC-P, WB
Host	Rabbit
Clonality	Polyclonal
Isotype	IgG
Target Name	FECH
Species	Human
Immunogen	Recombinant fusion protein corresponding to aa. 1-200 of Human FECH (NP_000131.2).
Conjugation	Un-conjugated
Alternate Names	EPP; EC 4.99.1.1; Ferrochelatase, mitochondrial; FCE; Protoheme ferro-lyase; Heme synthase

Application Instructions

Application table	Application	Dilution
	IHC-P	1:50 - 1:100
	WB	1:500 - 1:2000
Application Note	* The dilutions indicate recommended starting dilutions and the optimal dilutions or concentrations should be determined by the scientist.	
Positive Control	Mouse brain	
Observed Size	50 kDa	

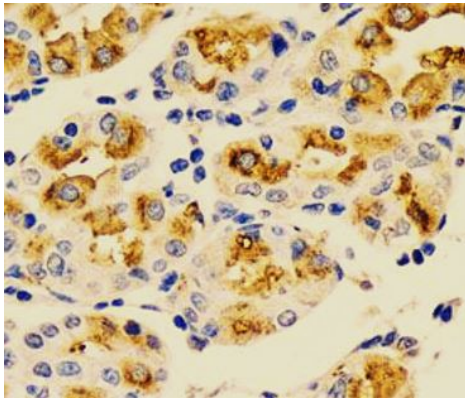
Properties

Form	Liquid
Purification	Affinity purified.
Buffer	PBS (pH 7.3), 0.02% Sodium azide and 50% Glycerol.
Preservative	0.02% Sodium azide
Stabilizer	50% Glycerol
Storage instruction	For continuous use, store undiluted antibody at 2-8°C for up to a week. For long-term storage, aliquot and store at -20°C. Storage in frost free freezers is not recommended. Avoid repeated freeze/thaw cycles. Suggest spin the vial prior to opening. The antibody solution should be gently mixed before use.
Note	For laboratory research only, not for drug, diagnostic or other use.

Bioinformation

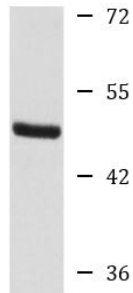
Gene Symbol	FECH
Gene Full Name	ferrochelatase
Background	The protein encoded by this gene is localized to the mitochondrion, where it catalyzes the insertion of the ferrous form of iron into protoporphyrin IX in the heme synthesis pathway. Mutations in this gene are associated with erythropoietic protoporphyria. Two transcript variants encoding different isoforms have been found for this gene. A pseudogene of this gene is found on chromosome 3.[provided by RefSeq, May 2010]
Function	Catalyzes the ferrous insertion into protoporphyrin IX. [UniProt]
Calculated Mw	48 kDa
Cellular Localization	Mitochondrion inner membrane, Peripheral membrane protein, Matrix side. [UniProt]

Images



ARG58667 anti-FECH antibody IHC-P image

Immunohistochemistry: Paraffin-embedded Human stomach stained with ARG58667 anti-FECH antibody at 1:100 dilution.



Mouse brain

ARG58667 anti-FECH antibody WB image

Western blot: 25 µg of Mouse brain lysate stained with ARG58667 anti-FECH antibody at 1:1000 dilution.