

ARG58656 anti-ELAVL2 antibody

Package: 100 µl
Store at: -20°C

Summary

Product Description	Rabbit Polyclonal antibody recognizes ELAVL2
Tested Reactivity	Hu, Ms, Rat
Tested Application	IHC-P, WB
Host	Rabbit
Clonality	Polyclonal
Isotype	IgG
Target Name	ELAVL2
Species	Human
Immunogen	Synthetic peptide within aa. 1-100 of Human ELAVL2 (NP_004423.2).
Conjugation	Un-conjugated
Alternate Names	HuB; ELAV-like neuronal protein 1; HUB; Hu-antigen B; Nervous system-specific RNA-binding protein Hel-N1; HELN1; HEL-N1; ELAV-like protein 2

Application Instructions

Application table	Application	Dilution
	IHC-P	1:50 - 1:200
	WB	1:1000 - 1:2000
Application Note	* The dilutions indicate recommended starting dilutions and the optimal dilutions or concentrations should be determined by the scientist.	
Positive Control	SH-SY5Y	
Observed Size	44 kDa	

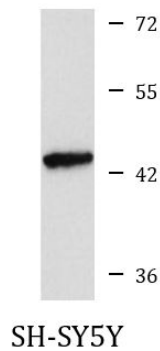
Properties

Form	Liquid
Purification	Affinity purified.
Buffer	PBS (pH 7.3), 0.02% Sodium azide and 50% Glycerol.
Preservative	0.02% Sodium azide
Stabilizer	50% Glycerol
Storage instruction	For continuous use, store undiluted antibody at 2-8°C for up to a week. For long-term storage, aliquot and store at -20°C. Storage in frost free freezers is not recommended. Avoid repeated freeze/thaw cycles. Suggest spin the vial prior to opening. The antibody solution should be gently mixed before use.
Note	For laboratory research only, not for drug, diagnostic or other use.

Bioinformation

Gene Symbol	ELAVL2
Gene Full Name	ELAV like neuron-specific RNA binding protein 2
Background	The protein encoded by this gene is a neural-specific RNA-binding protein that is known to bind to several 3' UTRs, including its own and also that of FOS and ID. The encoded protein may recognize a GAAA motif in the RNA. Three transcript variants encoding two different isoforms have been found for this gene. [provided by RefSeq, Jan 2010]
Function	Binds RNA. Seems to recognize a GAAA motif. Can bind to its own 3'-UTR, the FOS 3'-UTR and the ID 3'-UTR. [UniProt]
Calculated Mw	40 kDa

Images



ARG58656 anti-ELAVL2 antibody WB image

Western blot: 25 µg of SH-SY5Y cell lysate stained with ARG58656 anti-ELAVL2 antibody at 1:1000 dilution.