

## ARG58608 anti-ETS2 antibody

Package: 100 µl  
Store at: -20°C

### Summary

|                     |   |
|---------------------|---|
| Product Description | Rabbit Polyclonal antibody recognizes ETS2                          |
| Tested Reactivity   | Hu  |
| Predict Reactivity  | Ms, Bov   |
| Tested Application  | FACS, IHC-P, WB   |
| Host                | Rabbit  |
| Clonality           | Polyclonal  |
| Isotype             | IgG   |
| Target Name         | ETS2  |
| Species             | Human   |
| Immunogen           | KLH-conjugated synthetic peptide between aa. 146-173 of Human ETS2. |
| Conjugation         | Un-conjugated   |
| Alternate Names     | Protein C-ets-2; ETS2IT1  |

### Application Instructions

|                   |  |              |
|-------------------|--|--------------|
| Application table | Application  | Dilution     |
|                   | FACS   | 1:10 - 1:50  |
|                   | IHC-P  | 1:50 - 1:100 |
|                   | WB   | 1:1000       |
| Application Note  | * The dilutions indicate recommended starting dilutions and the optimal dilutions or concentrations should be determined by the scientist. |              |
| Positive Control  | MCF7   |              |

### Properties

|                     |  |
|---------------------|--|
| Form                | Liquid   |
| Purification        | Purification with Protein A and immunogen peptide.   |
| Buffer              | PBS and 0.09% (W/V) Sodium azide.  |
| Preservative        | 0.09% (W/V) Sodium azide   |
| Storage instruction | For continuous use, store undiluted antibody at 2-8°C for up to a week. For long-term storage, aliquot and store at -20°C or below. Storage in frost free freezers is not recommended. Avoid repeated freeze/thaw cycles. Suggest spin the vial prior to opening. The antibody solution should be gently mixed before use. |
| Note                | For laboratory research only, not for drug, diagnostic or other use.   |

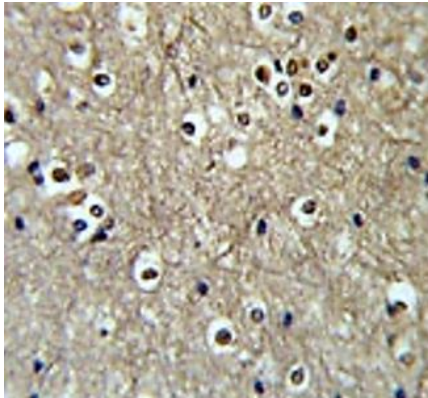
## Bioinformation

---

|                       |  |
|-----------------------|--|
| Gene Symbol           | ETS2   |
| Gene Full Name        | v-ets avian erythroblastosis virus E26 oncogene homolog 2  |
| Background            | This gene encodes a transcription factor which regulates genes involved in development and apoptosis. The encoded protein is also a protooncogene and shown to be involved in regulation of telomerase. A pseudogene of this gene is located on the X chromosome. Alternative splicing results in multiple transcript variants. [provided by RefSeq, Jan 2012] |
| Function              | Transcription factor activating transcription. Binds specifically the DNA GGAA/T core motif (Ets-binding site or EBS) in gene promoters and stimulates transcription. [UniProt]  |
| Calculated Mw         | 53 kDa   |
| PTM                   | Phosphorylation by CDK10 at Ser-220 and Ser-225 creates a phosphodegron that targets ETS2 for proteasomal degradation. [UniProt]   |
| Cellular Localization | Nucleus. [UniProt]   |

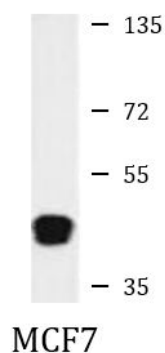
---

## Images



ARG58608 anti-ETS2 antibody IHC-P image

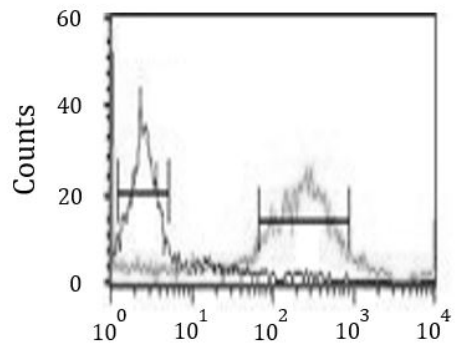
Immunohistochemistry: Formalin-fixed and paraffin-embedded Human brain tissue stained with ARG58608 anti-ETS2 antibody.



ARG58608 anti-ETS2 antibody WB image

Western blot: 35 µg of MCF7 cell lysate stained with ARG58608 anti-ETS2 antibody.

### ARG58608 anti-ETS2 antibody FACS image



Flow Cytometry: MCF7 cells stained with ARG58608 anti-ETS2 antibody (right histogram) or without primary antibody as control (left histogram), followed by incubation with FITC labelled secondary antibody.