

## ARG58582 anti-EphB3 antibody

Package: 50 µg  
Store at: -20°C

### Summary

Product Description	Rabbit Polyclonal antibody recognizes EphB3
Tested Reactivity	Hu
Tested Application	IHC-P, WB
Host	Rabbit
Clonality	Polyclonal
Isotype	IgG
Target Name	EphB3
Species	Human
Immunogen	Synthetic peptide corresponding to aa. 982-998 of Human EphB3. (SIQDMRLQMNQTLPVQV)
Conjugation	Un-conjugated
Alternate Names	HEK2; hEK2; EPH-like tyrosine kinase 2; Ephrin type-B receptor 3; EPH-like kinase 2; Tyrosine-protein kinase TYRO6; ETK2; TYRO6; EC 2.7.10.1; EK2; Embryonic kinase 2

### Application Instructions

Application table	Application	Dilution
	IHC-P	0.5 - 1 µg/ml
	WB	0.1 - 0.5 µg/ml

**Application Note**  
IHC-P: Antigen Retrieval: Heat mediated.  
\* The dilutions indicate recommended starting dilutions and the optimal dilutions or concentrations should be determined by the scientist.

### Properties

Form	Liquid
Purification	Affinity purification with immunogen.
Buffer	0.9% NaCl, 0.2% Na <sub>2</sub> HPO <sub>4</sub> , 0.05% Thimerosal, 0.05% Sodium azide and 5% BSA.
Preservative	0.05% Thimerosal and 0.05% Sodium azide
Stabilizer	5% BSA
Concentration	0.5 mg/ml
Storage instruction	For continuous use, store undiluted antibody at 2-8°C for up to a week. For long-term storage, aliquot and store at -20°C or below. Storage in frost free freezers is not recommended. Avoid repeated freeze/thaw cycles. Suggest spin the vial prior to opening. The antibody solution should be gently mixed before use.
Note	For laboratory research only, not for drug, diagnostic or other use.

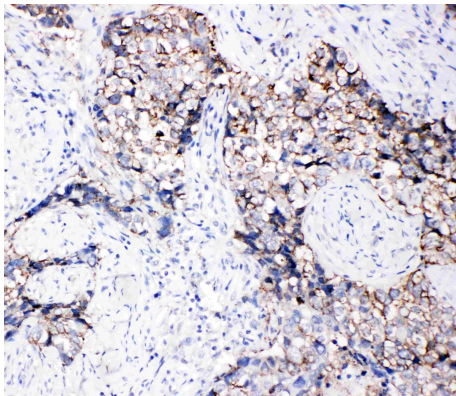
## Bioinformation

---

Gene Symbol	EPHB3
Gene Full Name	EPH receptor B3
Background	Ephrin receptors and their ligands, the ephrins, mediate numerous developmental processes, particularly in the nervous system. Based on their structures and sequence relationships, ephrins are divided into the ephrin-A (EFNA) class, which are anchored to the membrane by a glycosylphosphatidylinositol linkage, and the ephrin-B (EFNB) class, which are transmembrane proteins. The Eph family of receptors are divided into two groups based on the similarity of their extracellular domain sequences and their affinities for binding ephrin-A and ephrin-B ligands. Ephrin receptors make up the largest subgroup of the receptor tyrosine kinase (RTK) family. This gene encodes a receptor for ephrin-B family members. [provided by RefSeq, Mar 2010]
Function	Receptor tyrosine kinase which binds promiscuously transmembrane ephrin-B family ligands residing on adjacent cells, leading to contact-dependent bidirectional signaling into neighboring cells. The signaling pathway downstream of the receptor is referred to as forward signaling while the signaling pathway downstream of the ephrin ligand is referred to as reverse signaling. Generally has an overlapping and redundant function with EPHB2. Like EPHB2, functions in axon guidance during development regulating for instance the neurons forming the corpus callosum and the anterior commissure, 2 major interhemispheric connections between the temporal lobes of the cerebral cortex. In addition to its role in axon guidance plays also an important redundant role with other ephrin-B receptors in development and maturation of dendritic spines and the formation of excitatory synapses. Controls other aspects of development through regulation of cell migration and positioning. This includes angiogenesis, palate development and thymic epithelium development for instance. Forward and reverse signaling through the EFNB2/EPHB3 complex also regulate migration and adhesion of cells that tubularize the urethra and septate the cloaca. Finally, plays an important role in intestinal epithelium differentiation segregating progenitor from differentiated cells in the crypt. [UniProt]
Calculated Mw	110 kDa
PTM	Phosphorylated. Autophosphorylates upon ligand-binding. Autophosphorylation on Tyr-614 is required for interaction with SH2 domain-containing proteins. [UniProt]
Cellular Localization	Cell membrane; Single-pass type I membrane protein. Cell projection, dendrite. [UniProt]

## Images

---



ARG58582 anti-EphB3 antibody IHC-P image

Immunohistochemistry: Paraffin-embedded Human Lung Cancer Tissue stained with ARG58582 anti-EphB3 antibody.

ARG58582 anti-EphB3 antibody WB image

Western blot: HeLa and A549 cell lysates stained with ARG58582 anti-EphB3 antibody.

